



Largest U.S. silver producer, soon-to-be
largest Canadian silver producer

FEBRUARY 2024 UPDATE

RESPONSIBLE. SAFE. INNOVATIVE.



CAUTIONARY STATEMENTS

HECLA MINING COMPANY
NYSE: HL

FEBRUARY 2024 UPDATE

Cautionary Statement Regarding Forward-Looking Statements

This presentation contains "forward-looking statements" within the meaning of Section 27A of the Securities Act of 1933, as amended, and Section 21E of the Securities Exchange Act of 1934, as amended, which are intended to be covered by the safe harbor created by such sections and other applicable laws, including Canadian securities laws. Words such as "may", "will", "should", "expects", "intends", "projects", "believes", "estimates", "targets", "anticipates" and similar expressions are used to identify these forward-looking statements. Such forward-looking statements may include, without limitation: (i) the projections contained in the Technical Report Summary for each of Casa Berardi and Keno Hill; (ii) Lucky Friday is expected to ramp-up to full production in the first quarter of 2024; (iii) approximately \$50 million in proceeds from the Company's property insurance policy will be collected in 2024; (iv) Keno Hill's production will increase over time; (v) the Company expects to pay down on its revolving credit facility in 2024; (vi) the Company expects all four of its mines to be in operation in 2024; (vii) the Company expects silver production to increase by 15-20% in 2024, and by 30% by 2026; (viii) Casa Berardi will be a full surface operation by mid-2024; (ix) the Company will soon be Canada's largest silver producer; (x) Greens Creek and Lucky Friday will generate free cash flow in 2024; (xi) the projections contained in the Technical Report Summary for each of Casa Berardi and Keno Hill; (xii) approximately \$50 million in proceeds from the Company's property insurance policy will be collected in 2024; (xiii) Keno Hill will ramp-up production in 2024; (xiv) mine-specific and Company-wide 2024 estimates of future production, and 2025 and 2026 estimates of future production Company-wide; (xv) total cost of sales, as well as cash cost and AISC per ounce (in each case after by-product credits) for Greens Creek, Lucky Friday and Casa Berardi; and (xvi) Company-wide estimated spending on capital, exploration and pre-development for 2024. The material factors or assumptions used to develop such forward-looking statements or forward-looking information include that the Company's plans for development and production will proceed as expected and will not require revision as a result of risks or uncertainties, whether known, unknown or unanticipated, to which the Company's operations are subject.

Estimates or expectations of future events or results are based upon certain assumptions, which may prove to be incorrect, which could cause actual results to differ from forward-looking statements. Such assumptions, include, but are not limited to: (i) there being no significant change to current geotechnical, metallurgical, hydrological and other physical conditions; (ii) permitting, development, operations and expansion of the Company's projects being consistent with current expectations and mine plans; (iii) political/regulatory developments in any jurisdiction in which the Company operates being consistent with its current expectations; (iv) the exchange rate for the USD/CAD being approximately consistent with current levels; (v) certain price assumptions for gold, silver, lead and zinc; (vi) prices for key supplies being approximately consistent with current levels; (vii) the accuracy of our current mineral reserve and mineral resource estimates; (viii) there being no significant changes to the availability of employees, vendors and equipment; (ix) the Company's plans for development and production will proceed as expected and will not require revision as a result of risks or uncertainties, whether known, unknown or unanticipated; (x) counterparties performing their obligations under hedging instruments and put option contracts; (xi) sufficient workforce is available and trained to perform assigned tasks; (xii) weather patterns and rain/snowfall within normal seasonal ranges so as not to impact operations; (xiii) relations with interested parties, including First Nations and Native Americans, remain productive; (xiv) maintaining availability of water rights; (xv) factors do not arise that reduce available cash balances; and (xvi) there being no material increases in our current requirements to post or maintain reclamation and performance bonds or collateral related thereto.

In addition, material risks that could cause actual results to differ from forward-looking statements include, but are not limited to: (i) gold, silver and other metals price volatility; (ii) operating risks; (iii) currency fluctuations; (iv) increased production costs and variances in ore grade or recovery rates from those assumed in mining plans; (v) community relations; (vi) conflict resolution and outcome of projects or oppositions; (vii) litigation, political, regulatory, labor and environmental risks; (viii) exploration risks and results, including that mineral resources are not mineral reserves, they do not have demonstrated economic viability and there is no certainty that they can be upgraded to mineral reserves through continued exploration; (ix) the failure of counterparties to perform their obligations under hedging instruments; (x) we take a material impairment charge on any of our assets; and (xi) inflation causes our costs to rise more than we currently expect. For a more detailed discussion of such risks and other factors, see the Company's 2023 Annual Report on Form 10-K, filed with the Securities and Exchange Commission ("SEC") on February 15, 2024. The Company does not undertake any obligation to release publicly, revisions to any "forward-looking statement," including, without limitation, outlook, to reflect events or circumstances after the date of this presentation, or to reflect the occurrence of unanticipated events, except as may be required under applicable securities laws. Investors should not assume that any lack of update to a previously issued "forward-looking statement" constitutes a reaffirmation of that statement. Continued reliance on "forward-looking statements" is at investors' own risk.

Cautionary Statements to Investors on Reserves and Resources

This presentation uses the terms "mineral resources", "measured mineral resources", "indicated mineral resources" and "inferred mineral

resources." Mineral resources that are not mineral reserves do not have demonstrated economic viability. You should not assume that all or any part of measured or indicated mineral resources will ever be converted into mineral reserves. Further, inferred mineral resources have a great amount of uncertainty as to their existence and as to whether they can be mined legally or economically, and an inferred mineral resource may not be considered when assessing the economic viability of a mining project, and may not be converted to a mineral reserve. We report reserves and resources under the SEC's mining disclosure rules ("S-K 1300") and Canada's National Instrument 43-101 – Standards of Disclosure for Mineral Projects ("NI 43-101") because we are a "reporting issuer" under Canadian securities laws. Unless otherwise indicated, all resource and reserve estimates contained in this presentation have been prepared in accordance with S-K 1300 as well as NI 43-101.

Qualified Person (QP)

Kurt D. Allen, MSc., CPG, VP - Exploration of Hecla Mining Company and Keith Blair, MSc., CPG, Chief Geologist of Hecla Limited, who serve as a Qualified Person under S-K 1300 and NI 43-101, supervised the preparation of the scientific and technical information concerning Hecla's mineral projects in this presentation. Technical Report Summaries for each of the Company's Greens Creek and Lucky Friday properties are filed as exhibits 96.1 and 96.2 respectively, to the Company's Annual Report on Form 10-K for the year ended December 31, 2022 and are available at www.sec.gov. A Technical Report Summary for each of the Company's Casa Berardi and Keno Hill properties will be filed as exhibits 96.3 and 96.4, respectively, to the Company's Annual Report on Form 10-K for the year ended December 31, 2023 to be filed on February 15, 2024 and will then be available at www.sec.gov. Information regarding data verification, surveys and investigations, quality assurance program and quality control measures and a summary of analytical or testing procedures for (i) the Greens Creek Mine are contained in its Technical Report Summary and in a NI 43-101 technical report titled "Technical Report for the Greens Creek Mine" effective date December 31, 2018, (ii) the Lucky Friday Mine are contained in its Technical Report Summary and in its technical report titled "Technical Report for the Lucky Friday Mine Shoshone County, Idaho, USA" effective date April 2, 2014, (iii) Casa Berardi will be contained in its Technical Report Summary titled "Technical Report Summary on the Casa Berardi Mine, Northwestern Quebec, Canada" effective date December 31, 2023 and are contained in its NI 43-101 technical report titled "Technical Report on the mineral resource and mineral reserve estimate for Casa Berardi Mine, Northwestern Quebec, Canada" effective date December 31, 2018, (iv) Keno Hill will be contained in its Technical Report Summary titled "S-K 1300 Technical Report Summary on the Keno Hill Mine, Yukon, Canada" and are contained in its NI 43-101 technical report titled "Technical Report on Updated Mineral Resource and Reserve Estimate of the Keno Hill Silver District" effective date April 1, 2021, and (v) the San Sebastian Mine, Mexico, are contained in a technical report prepared for Hecla titled "Technical Report for the San Sebastian Ag-Au Property, Durango, Mexico" effective date September 8, 2015. Also included or to be included in each technical report is a description of the key assumptions, parameters and methods used to estimate mineral reserves and resources and a general discussion of the extent to which the estimates may be affected by any known environmental, permitting, legal, title, taxation, socio-political, marketing, or other relevant factors. Information regarding data verification, surveys and investigations, quality assurance program and quality control measures and a summary of sample, analytical or testing procedures are contained in technical reports prepared for Klondex Mines Ltd. for (i) the Fire Creek Mine (technical report dated March 31, 2018), (ii) the Hollister Mine (technical report dated May 31, 2017, amended August 9, 2017), and (iii) the Midas Mine (technical report dated August 31, 2014, amended April 2, 2015). Information regarding data verification, surveys and investigations, quality assurance program and quality control measures and a summary of sample, analytical or testing procedures are contained in technical reports prepared for ATAC Resources Ltd. for (i) the Osiris Project (technical report dated July 28, 2022) and (ii) the Tiger Project (technical report dated February 27, 2020). Copies of these technical reports are available under the SEDAR profiles of Klondex Mines Unlimited Liability Company and ATAC Resources Ltd., respectively, at www.sedar.com (the Fire Creek technical report is also available under Hecla's profile on SEDAR). Mr. Allen and Mr. Blair reviewed and verified information regarding drill sampling, data verification of all digitally collected data, drill surveys and specific gravity determinations relating to all the mines. The review encompassed quality assurance programs and quality control measures including analytical or testing practice, chain-of-custody procedures, sample storage procedures and included independent sample collection and analysis. This review found the information and procedures meet industry standards and are adequate for Mineral Resource and Mineral Reserve estimation and mine planning purposes.

Cautionary Note Regarding Non-GAAP measures

Cash cost and AISC per ounce of silver and gold, after by-product credits, EBITDA, adjusted EBITDA, All-in Sustaining Costs, after by-product credits, realized silver margin, and free cash flow represent non-U.S. Generally Accepted Accounting Principles (GAAP) measurements. A reconciliation of these non-GAAP measures to the most comparable GAAP measurements can be found in the Appendix.

WHAT MAKES HECLA THE PREMIER SILVER INVESTMENT

HECLA MINING COMPANY
NYSE: HL

FEBRUARY 2024 UPDATE

Best In Class Silver Portfolio

- **Leading Silver Producer in the World's Best Mining Jurisdictions**
 - Largest U.S silver producer (45%)*, Canada's by 2024, 3rd largest primary silver producer globally
- **Safe and Sustainable Mining**
 - Demonstrated safety record, small environmental footprint with net zero emissions
- **Lowest Cost Silver Mines Amongst Peers**
 - Silver mines in the best one-third of cost curve
- **Near-Term, Capital Efficient Organic Growth**
 - Up to 20Moz by 2026
- **High-Quality Reserve Base**
 - Reserve mine lives of 10+ years, significant additional resource base
- **Culture of Innovation and Operational Excellence**

* 2022 Data



SAFE AND SUSTAINABLE MINING

HECLA MINING COMPANY
NYSE: HL

FEBRUARY 2024 UPDATE

All-Injury Frequency Rate of 1.45 (*)

- 16% lower than the U.S. average
- Reduced by 76% since 2012
- Greens Creek (0.29) and Lucky Friday (0.66) AIFR lowest in history

Small environmental footprint

- Net zero emissions in 2021, 2022, and 2023 (**)
- Low water use of 76 gallons per ounce produced

Located in two of the top three regions in the Investment Attractiveness Index (***)

- #2 Canada and #3 United States

~40,500

hours of safety and health training
for employees and contractors

3,568

hours of environmental
training company-wide

\$833M

of economic impact in the
communities where we operate

* AIFR as of December 31, 2023

** On scope 1 & 2 emissions, and through the purchase of carbon offset credits

*** Investment Attractiveness Index, Fraser Institute Annual Survey of Mining Companies, 2022

Safety and health training data is as of 2023, Environmental training and economic impact data as of 2022

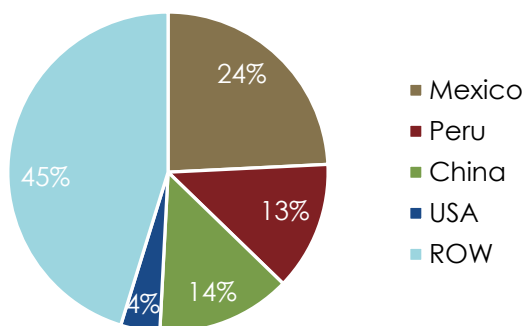
LARGEST SILVER PRODUCER IN THE U.S. & SOON, CANADA

HECLA MINING COMPANY
NYSE: HL

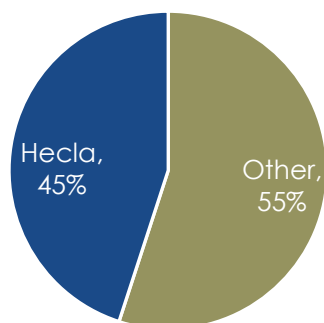
FEBRUARY 2024 UPDATE

World Production of Silver

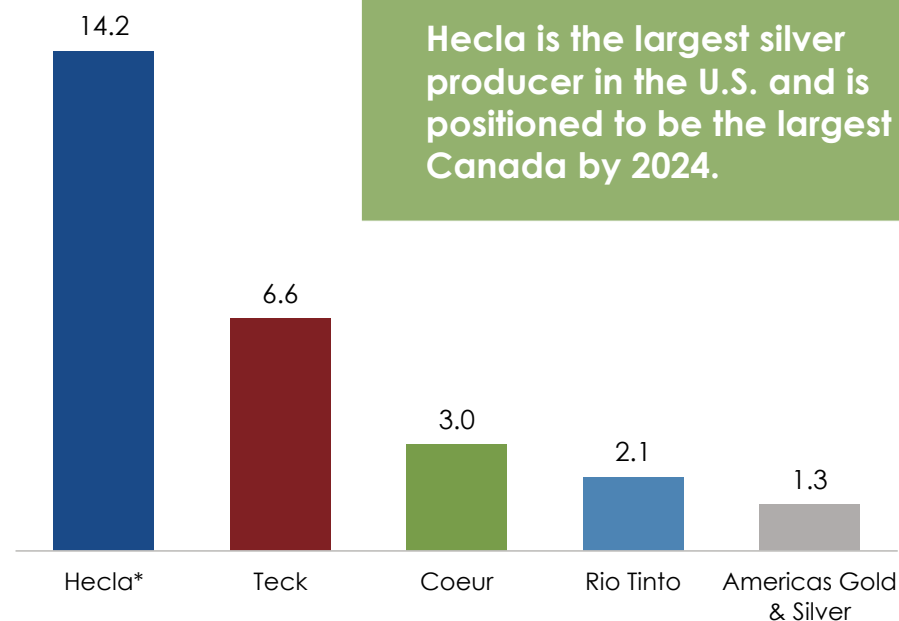
Three countries produce ~51% of the world's silver production.



Hecla mines ~45% of the U.S. silver production.



2022 U.S. Silver Production (Moz)



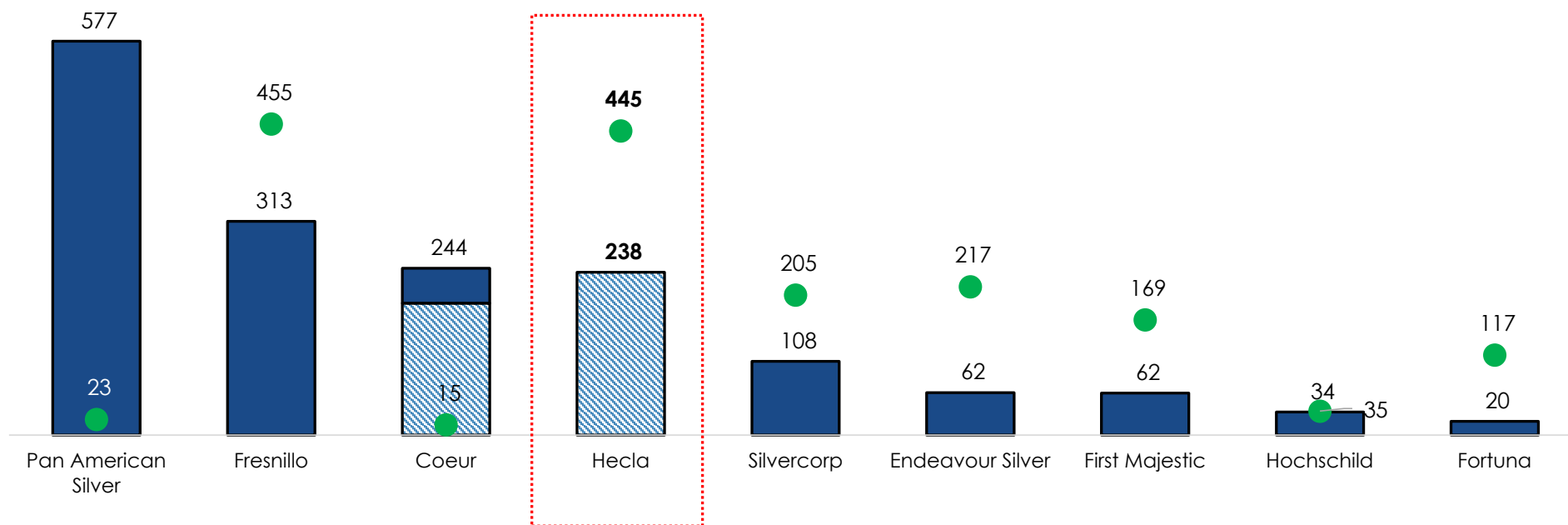
LARGEST U.S./CANADA RESERVE BASE WITH HIGHEST GRADES

HECLA MINING COMPANY
NYSE: HL

FEBRUARY 2024 UPDATE

Silver Reserves and Reserve Grade*

■ Silver Reserves (Moz) ● Silver Grade (g/t) ▨ Silver Reserves (Moz) in U.S. and Canada



Source: Company Filings

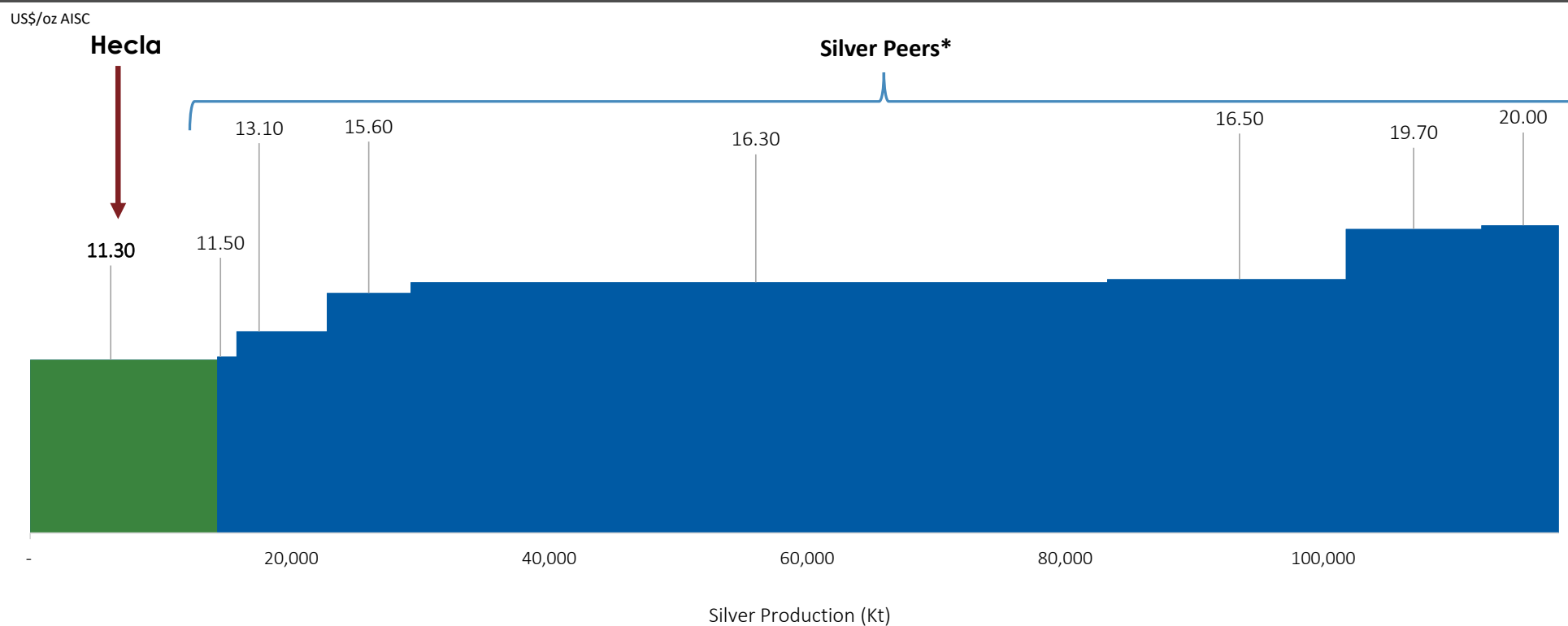
Hecla, Coeur data as of December 31, 2023. Endeavour Silver, First Majestic, Fortuna, Hochschild as of Dec 31, 2022. Silvercorp as of November 30, 2022. Pan American Silver (June 30, 2023) and Fresnillo as of May 31, 2023

LOW-COST PROFILE SILVER ASSETS

HECLA MINING COMPANY
NYSE: HL

FEBRUARY 2024 UPDATE

Silver AISC Curve of Hecla and Silver Peers* – 12 Months Ended December 31, 2022



Source: S&P Global Market Intelligence, Morgan Stanley

* Peers include Silvercrest, Coeur, Fortuna, Fresnillo, Pan American Silver, First Majestic Silver, Endeavour Silver

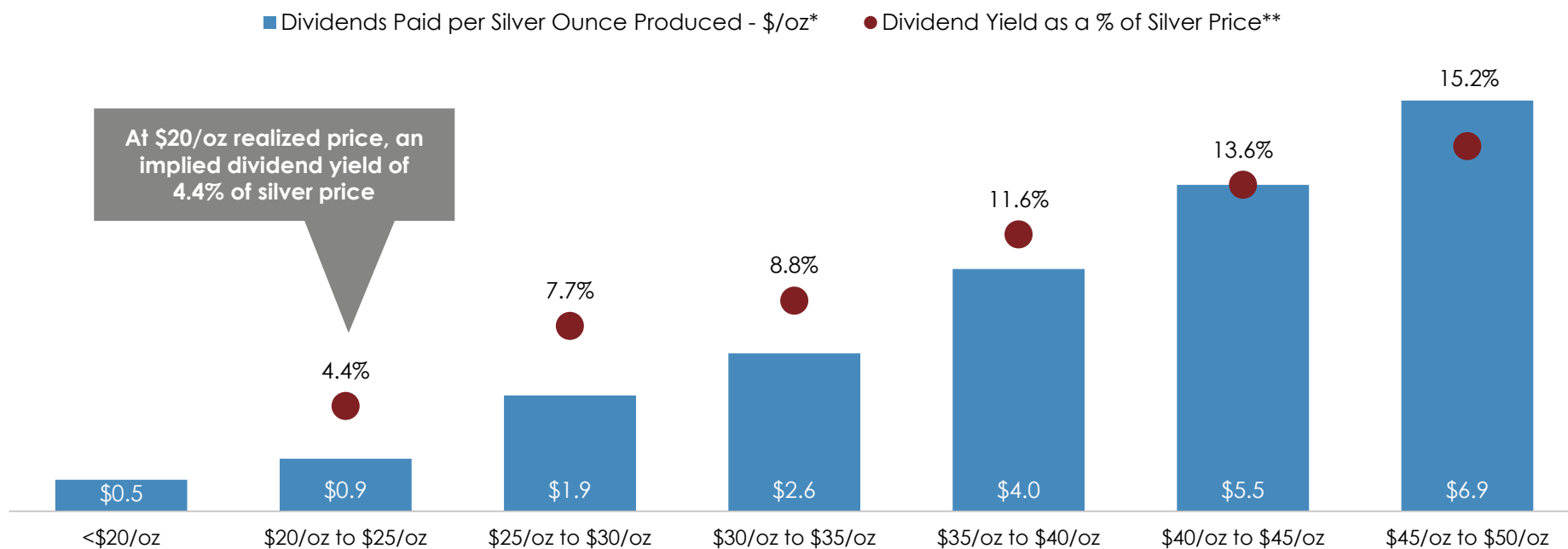
LEADING DIVIDEND POLICY WITH SILVER LINKED DIVIDEND

HECLA MINING COMPANY
NYSE: HL

FEBRUARY 2024 UPDATE

Industry's only silver-linked dividend policy pays an annual base dividend (1.5 cents per share) plus a silver price-linked dividend that starts at \$20/oz silver price.

Silver Linked Dividends



* Assumes 17Moz of silver production

** Dividend yield as a basis of silver price calculated as: Dividend Paid per ounce of silver/Silver Price (Average of the range, for example: \$27.50/oz used for \$25-\$30/oz range)



OUR OPERATIONS

Silver mines are in the best third of cost curve

RESPONSIBLE. SAFE. INNOVATIVE.

GREENS CREEK: FLAGSHIP MINE

HECLA MINING COMPANY
NYSE: HL

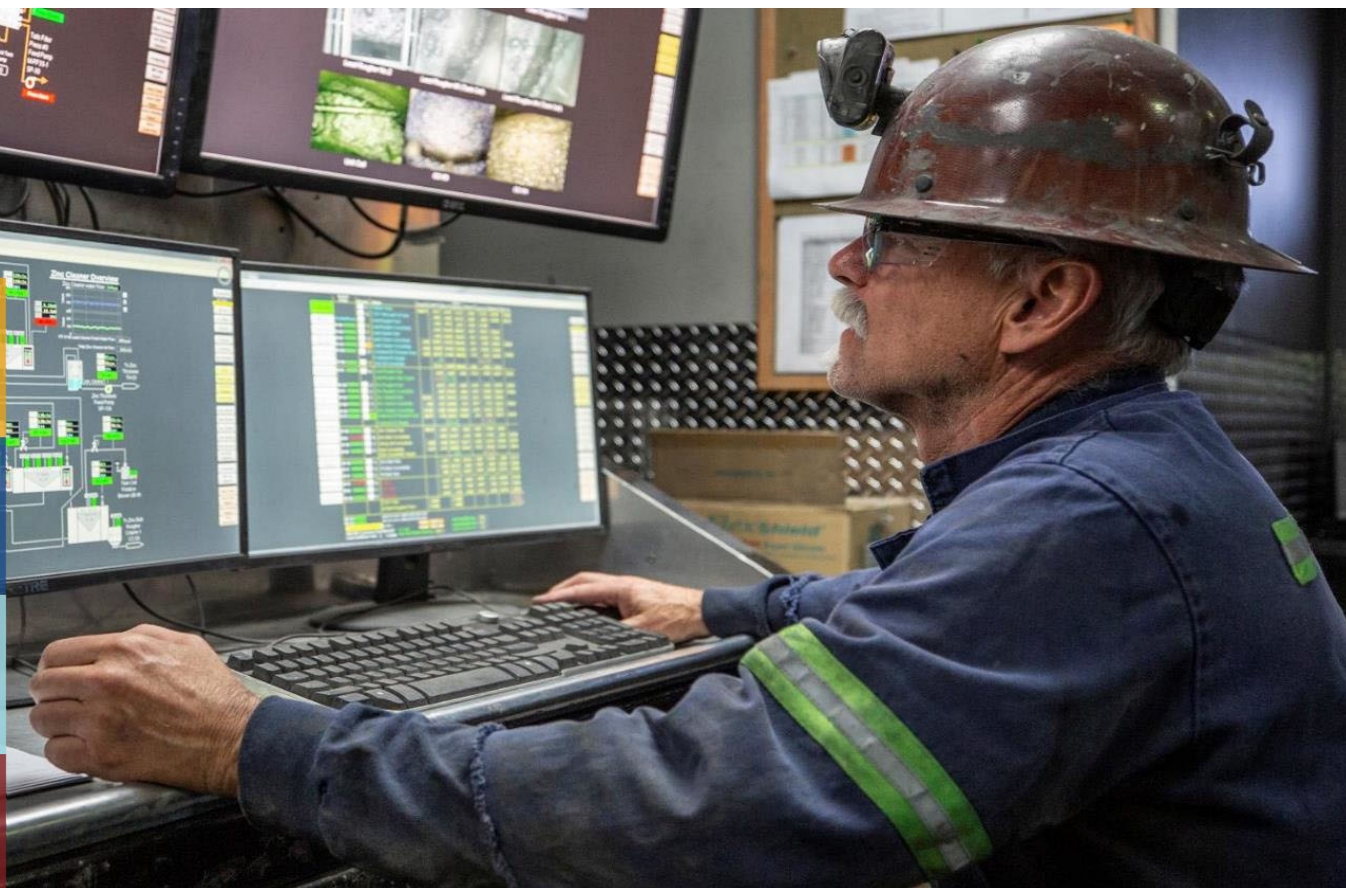
GREENS CREEK

Location: Admiralty Island, Alaska
Type: Underground
Metals: Silver, Gold, Lead, Zinc

Silver Reserves: 105Moz at 10.5 opt
Mine Plan: 14 Years

Energy Use: 88% of electricity is
line power, of which 100% is
renewable hydropower

2022 Direct Local Economic Impact:
\$219M



WORLD'S 11th LARGEST SILVER MINE

HECLA MINING COMPANY
NYSE: HL

GREENS CREEK

Since 1987, Greens Creek has:

- Mined more than -
 - **20.9 million** tons, containing **354.7Moz** Silver, **2.9Moz**, Gold, **4.1Blbs** Zinc, **1.6Blbs** Lead
- Generated more than -
 - **\$3.0** billion in cash flow from operations
 - **\$2.0** billion in free cash flow
 - **2023 and 2022:** \$122 million and \$120 million in free cash flow, respectively

Continuous Improvements and Innovation:

- Since 2008, when Hecla became the operator -
 - **7%** increase in silver recoveries since 2008 to 81%
 - **25%** increase in throughput to ~2,506 tons per day
 - ✓ Mill achieved **2,600** tons per day in Q4/2023, when available



2023 Performance and 2024 Guidance

		2023	2024 Guidance
Silver Produced	Moz	9.7	8.8 - 9.2
Total Cost of Sales ⁽⁷⁾	\$M	\$260	\$252
Capital Additions	\$M	\$44	\$59 - \$63
Cash Cost ⁽⁵⁾	\$/Ag oz	\$2.53	\$3.50 - \$4.00
AISC ⁽⁴⁾	\$/Ag oz	\$7.14	\$9.50 - \$10.25

CONTINUOUS IMPROVEMENT SINCE ACQUISITION

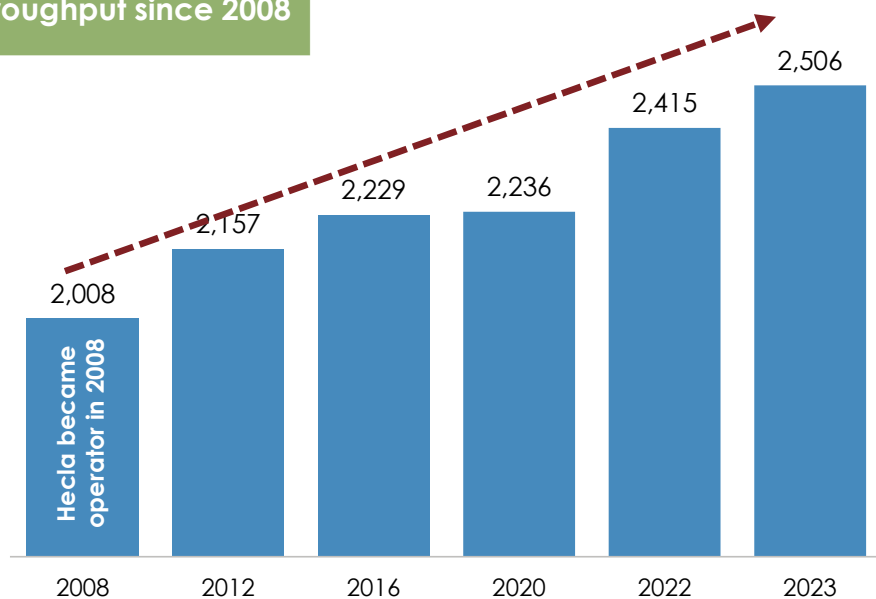
HECLA MINING COMPANY
NYSE: HL

GREENS CREEK

Mill Throughput, 2008 – 2023

Tons per Day

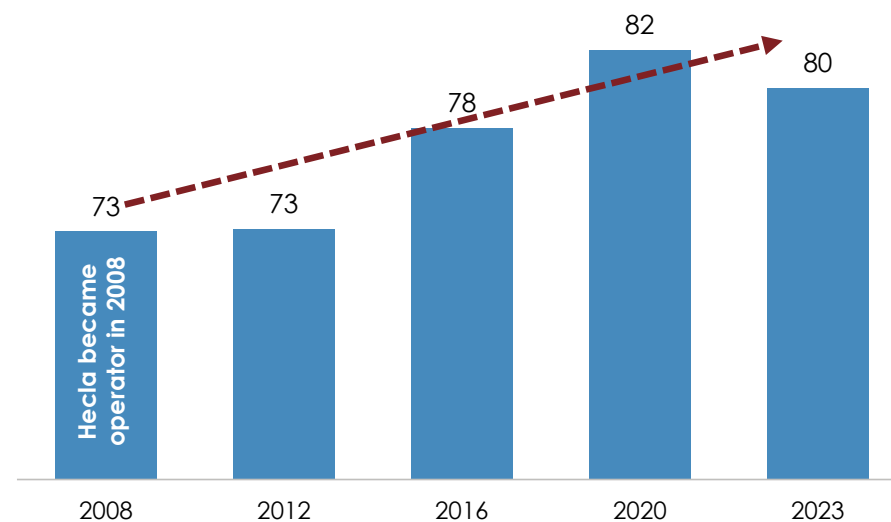
25% increase in throughput since 2008



Silver Mill Recoveries, 2008 - 2023

%

7% Increase in silver recoveries since 2008



CONSISTENCY & INNOVATION → FREE CASH FLOW ENGINE

HECLA MINING COMPANY
NYSE: HL

GREENS CREEK

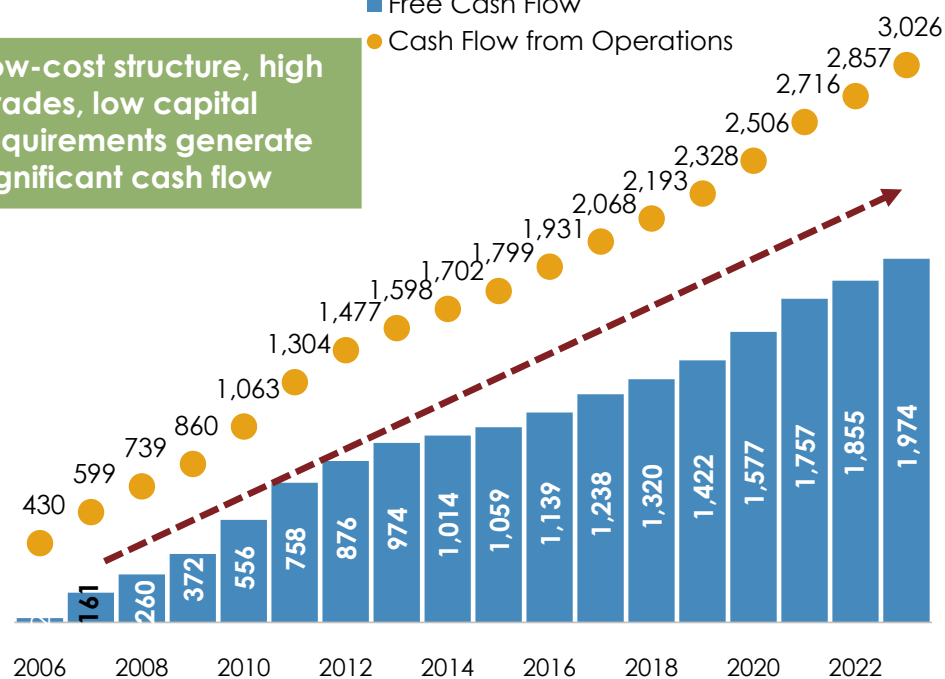
Cumulative Cash Flow from Operations, Free Cash Flow*

(\$ Million)

■ Free Cash Flow

● Cash Flow from Operations

Low-cost structure, high grades, low capital requirements generate significant cash flow



* Free cash flow is a non-GAAP measure and reconciliation to Gross Profit (GAAP) is shown in the Appendix.

123%

Return on investment from
2008 – 2023 based on 2008
acquisition price of \$758M
for 70% of Greens Creek

LUCKY FRIDAY: POSITIONED FOR GROWTH

HECLA MINING COMPANY
NYSE: HL

LUCKY FRIDAY

Location: Mullan, Idaho
Type: Underground
Metals: Silver, Lead, Zinc

Silver Reserves: 78Moz at 12.5 opt
Mine Plan: 19 Years

Energy Use: 60% of electricity is
from renewable hydropower, with
the remaining from natural gas

2022 Direct Local Economic Impact:
\$146M



INNOVATION DRIVEN GROWTH

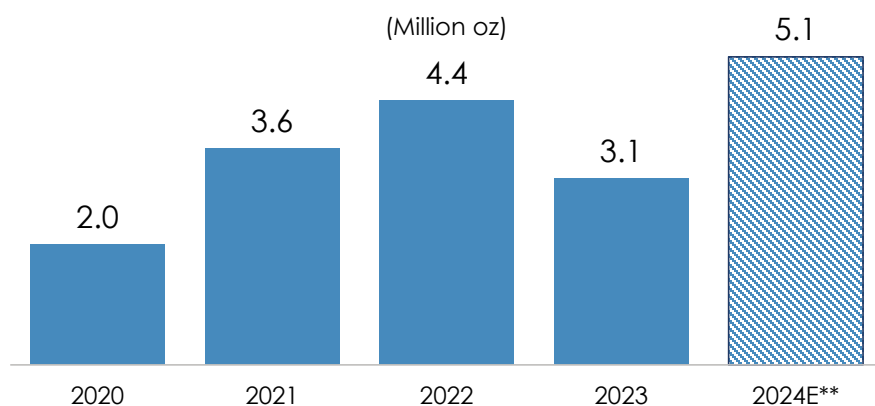
HECLA MINING COMPANY
NYSE: HL

LUCKY FRIDAY

2nd Cornerstone Asset, Mine plan of 19 Years

- Poised to be a 5Moz silver producer
- H1/2023 - Generated \$65M in cash flow from operations and \$34M in free cash flow⁽²⁾
- Expect \$50M in insurance payments to be received through 2024, first payment received in February*

Silver Production - 2020 – 2024F



*Deductibles apply - \$0.5M in property damage, 30-day dollar value in business interruption

** Midpoint of 2024 guidance



2023 Performance and 2024 Guidance

		2023	2024 Guidance
Silver Produced	Moz	3.1	5.0 – 5.3
Total Cost of Sales ⁽⁷⁾	\$M	\$84	\$130
Capital Additions*	\$M	\$65	\$45 - \$50
Cash Cost ⁽⁵⁾	\$/Ag oz	\$5.51	\$2.50 - \$3.25
AISC ⁽⁴⁾	\$/Ag oz	\$12.21	\$10.50 - \$12.25

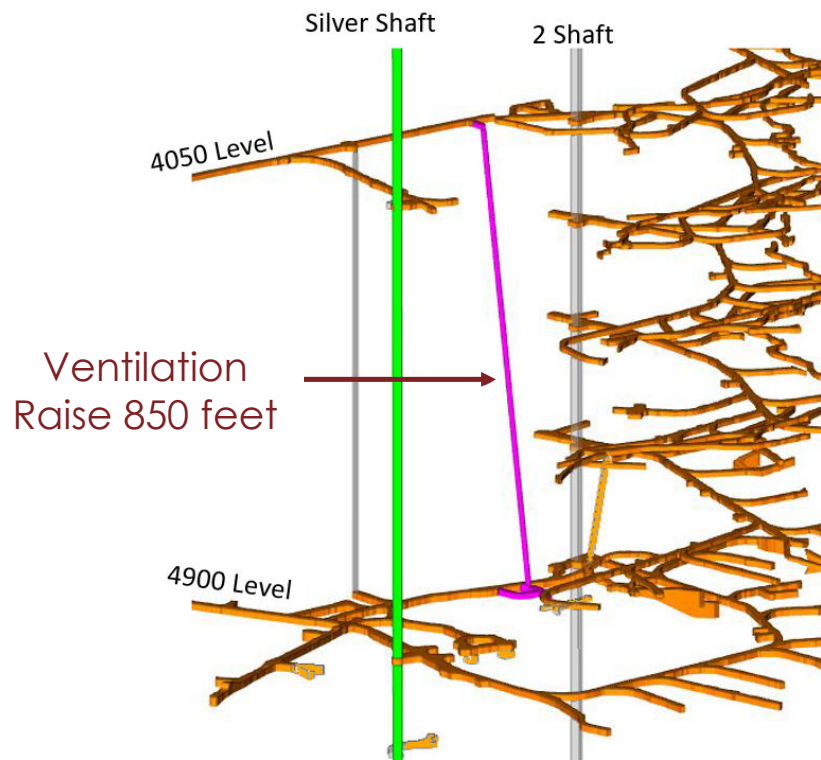
* Net of finance leases

COMPLETED MITIGATION PLANS FOR SECONDARY EGRESS

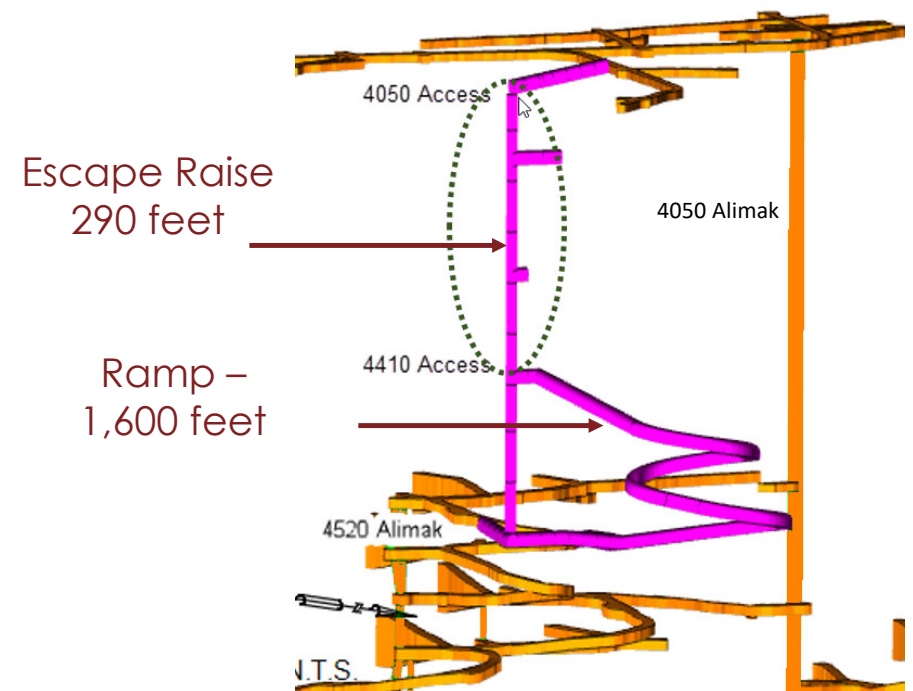
HECLA MINING COMPANY
NYSE: HL

LUCKY FRIDAY

Vent Bypass Raise



Escape Raise and Ramp



STRONG LABOR RELATIONS

HECLA MINING COMPANY
NYSE: HL

LUCKY FRIDAY

Union ratification of labor contract in January 2023 solidifies Lucky Friday's growth

- No material changes; work rules are largely unchanged

Key terms

- Term of agreement – 6 years and 4 months
- Longest contract in Hecla's history with the union

Increase in wages to reflect inflation adjustments

- Average annual increase of \$5M through the reserve mine-life
- Wage increases maintain Hecla's competitiveness in the Silver Valley

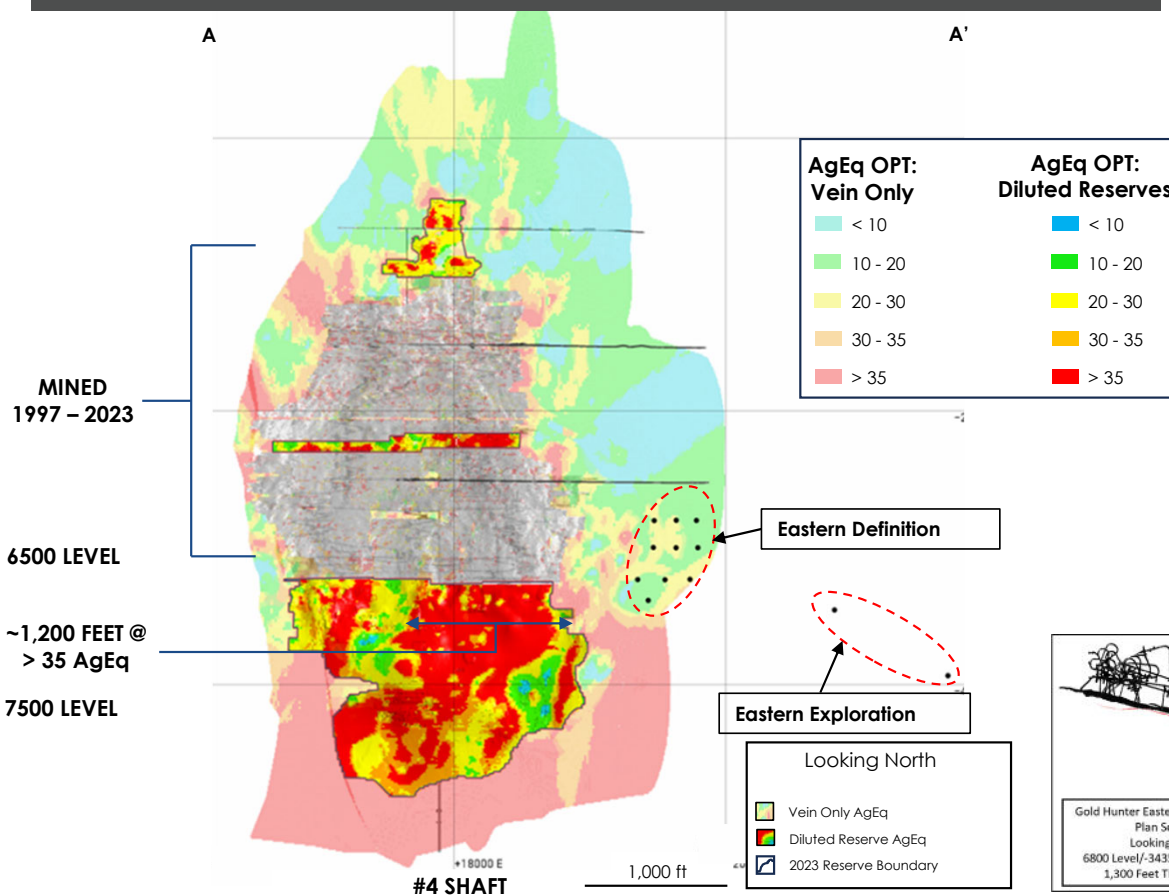


POTENTIAL FOR GROWTH AT DEPTH

HECLA MINING COMPANY
NYSE: HL

FEBRUARY 2024 UPDATE

Lucky Friday 30 Vein Long Section



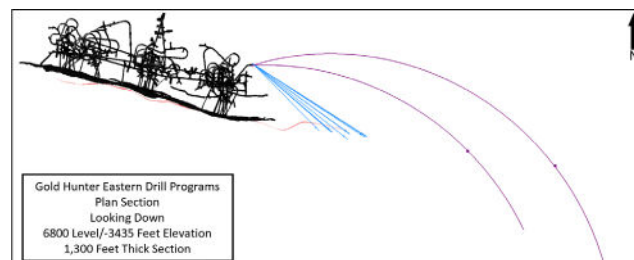
Exploration Program

Eastern Definition Program:

- 10 Drill holes, 14,000 feet
- Potential for ~10 Moz Silver

Eastern Exploration Program:

- 2 Drill holes to test >2,000 feet of strike length, continuity of 30 vein



UNDERHAND CLOSED BENCH METHOD

HECLA MINING COMPANY
NYSE: HL

LUCKY FRIDAY

UCB mining method: large-scale blasting proactively manages seismic risk and increases throughput

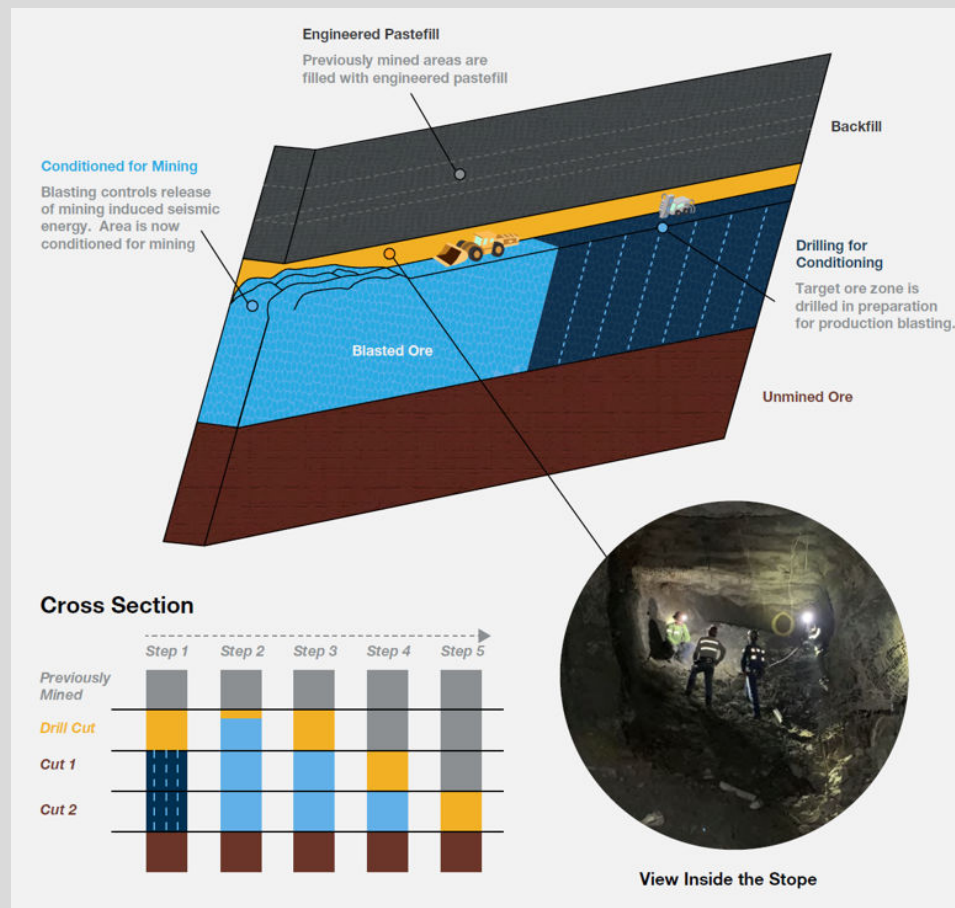
Uses advanced drilling and blasting techniques to fragment the mineralized ore zone

Is safer: miners work below engineered backfill and above a de-stressed zone

Is more productive: larger and less handheld equipment, more task-based mining



Allows for greater control of the release of seismic energy, resulting in improved safety



BEST DECADE IN 80 YEAR HISTORY IS AHEAD

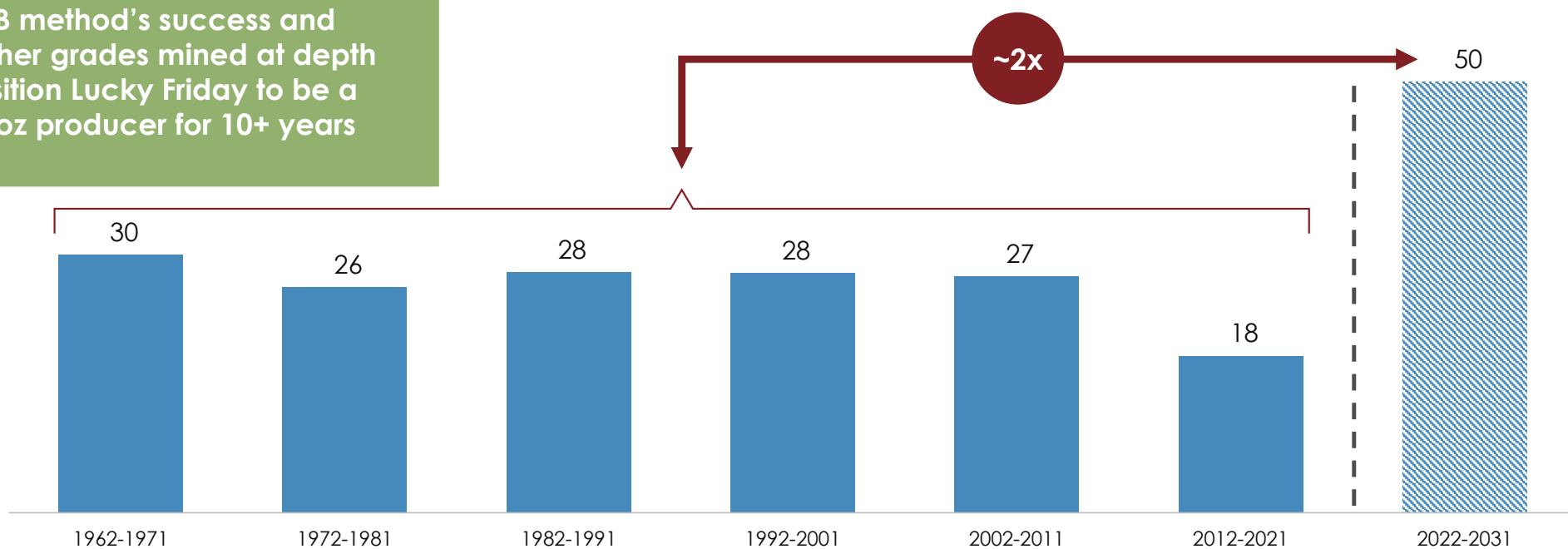
HECLA MINING COMPANY
NYSE: HL

LUCKY FRIDAY

Silver Production by Decade*

(Million oz)

UCB method's success and higher grades mined at depth position Lucky Friday to be a 5Moz producer for 10+ years



Source: S-K 1300 Report for Lucky Friday, filed February 22, 2022

KENO HILL: PRODUCTION GROWTH IN YUKON

HECLA MINING COMPANY
NYSE: HL

KENO HILL

Location: Yukon, Canada
Type: Underground
Metals: Silver, Lead, Zinc

Silver Reserves: 55 Moz at 26.6 opt
Mine Plan: 11 years

Energy Use: 86% of electricity is
from renewable hydropower and
wind

2022 Direct Local Economic Impact:
\$33M



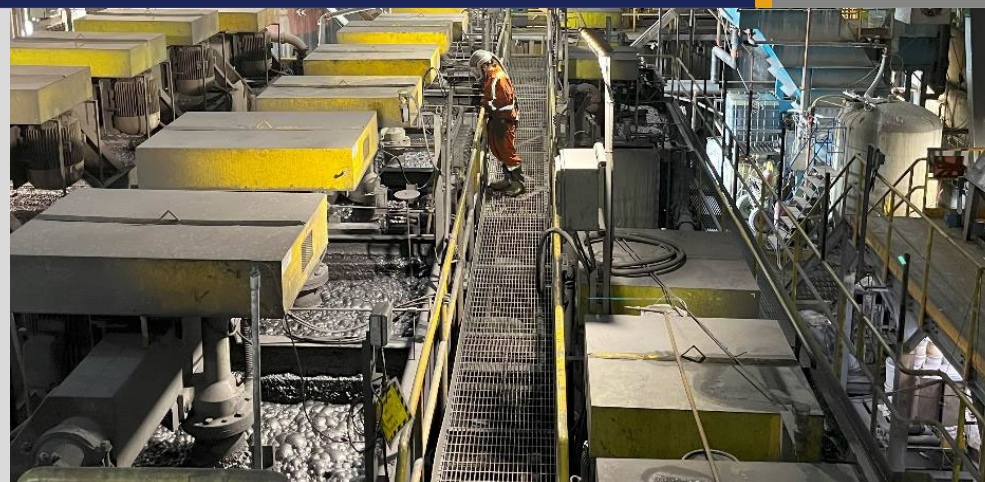
BUILDING A STRONG FOUNDATION

HECLA MINING COMPANY
NYSE: HL

KENO HILL

Positioned to be Canada's largest silver producer

- Largest primary silver reserves in Canada
- Since acquisition, 45% increase in silver reserves to ~55Moz at 26.6 opt
- Land package of 88 square miles, Significant regional potential
 - Exploration drilling in 2023 confirms significant exploration potential in the district
- Further regional consolidation with ATAC acquisition, additional ~650 square miles
- Hecla's injury-free standard driving the pace of production and development



2023 Performance and 2024 Guidance

		2023	2024 Guidance
Silver Produced	Moz	1.5	2.7 – 3.0
Total Cost of Sales ⁽⁷⁾	\$M	\$36	--
Capital Additions*	\$M	\$45	\$30 - \$34

* Net of finance leases, finance leases in 2023

KENO HILL TECHNICAL REPORT HIGHLIGHTS

HECLA MINING COMPANY
NYSE: HL

KENO HILL



Reserves & Resources, as of 12/31/2023

	Tons (000)	Silver Grade (opt)	Silver (000 oz)	Lead (Tons)	Zinc (Tons)
Reserves	2,069	26.6	55,068	58,170	52,380
Measured & Indicated	4,504	7.5	33,926	41,120	157,350
Inferred	2,836	11.2	31,791	32,040	51,870

Technical Report S-K 1300 Highlights

Mine life, based on reserve plan	years	11
Ore Tons Processed	Tons (000)	2,069
Silver Grade	Opt	26.6
Silver Recovery	%	96.0
Total Silver Produced	oz (000)	52,865
Silver Produced – 5 Year Avg. (2024-2028)	oz (000)	4,416

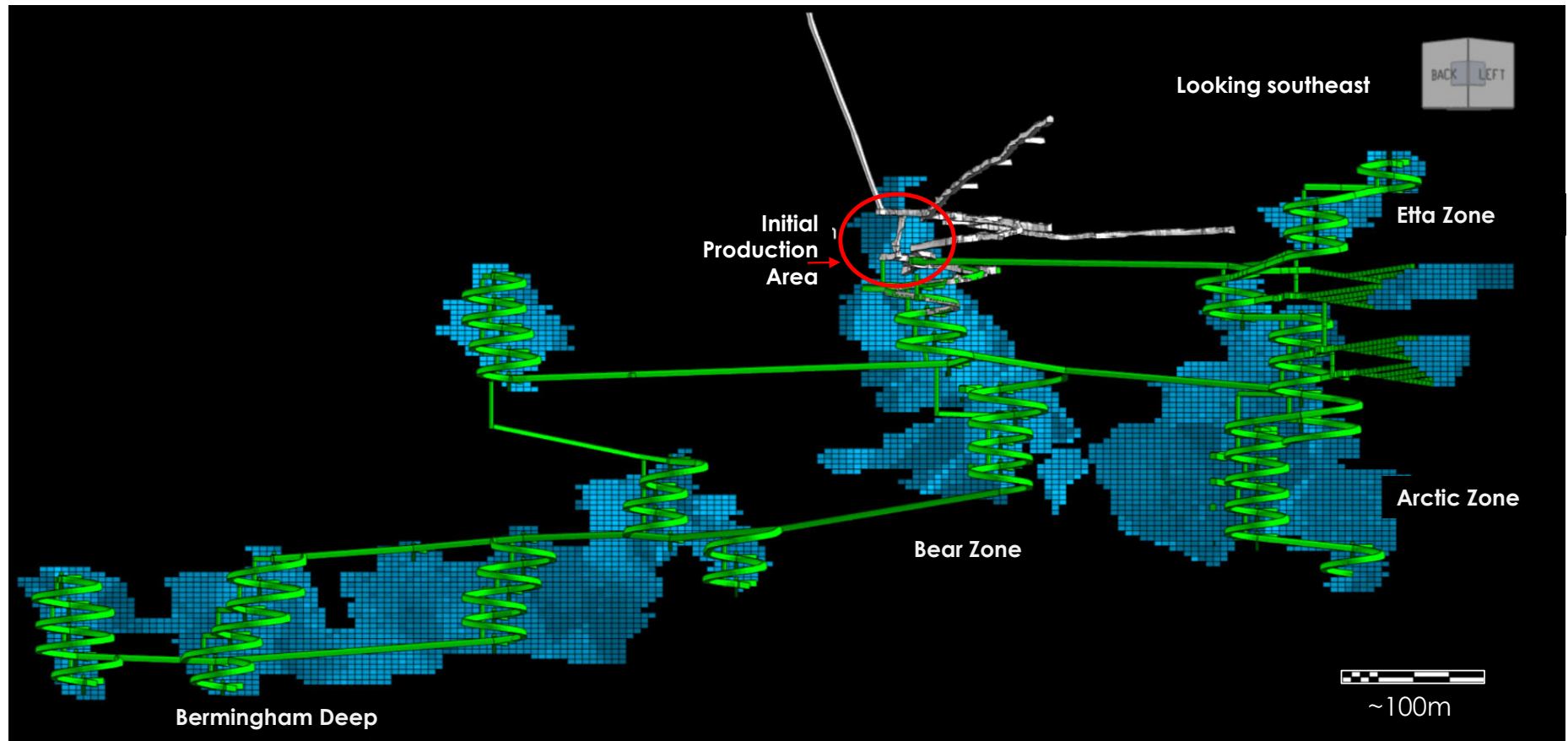
Financial Highlights (Silver \$22/oz, Lead \$0.95/lb. Zinc \$1.15/lb.)

Total Operating Costs	\$/ton milled	\$257
Total Capex	\$M	\$195
NPV _{0%} , after-tax	\$M	\$420
NPV _{5%} , after-tax	\$M	\$305

DEVELOPMENT – BIRMINGHAM

HECLA MINING COMPANY
NYSE: HL

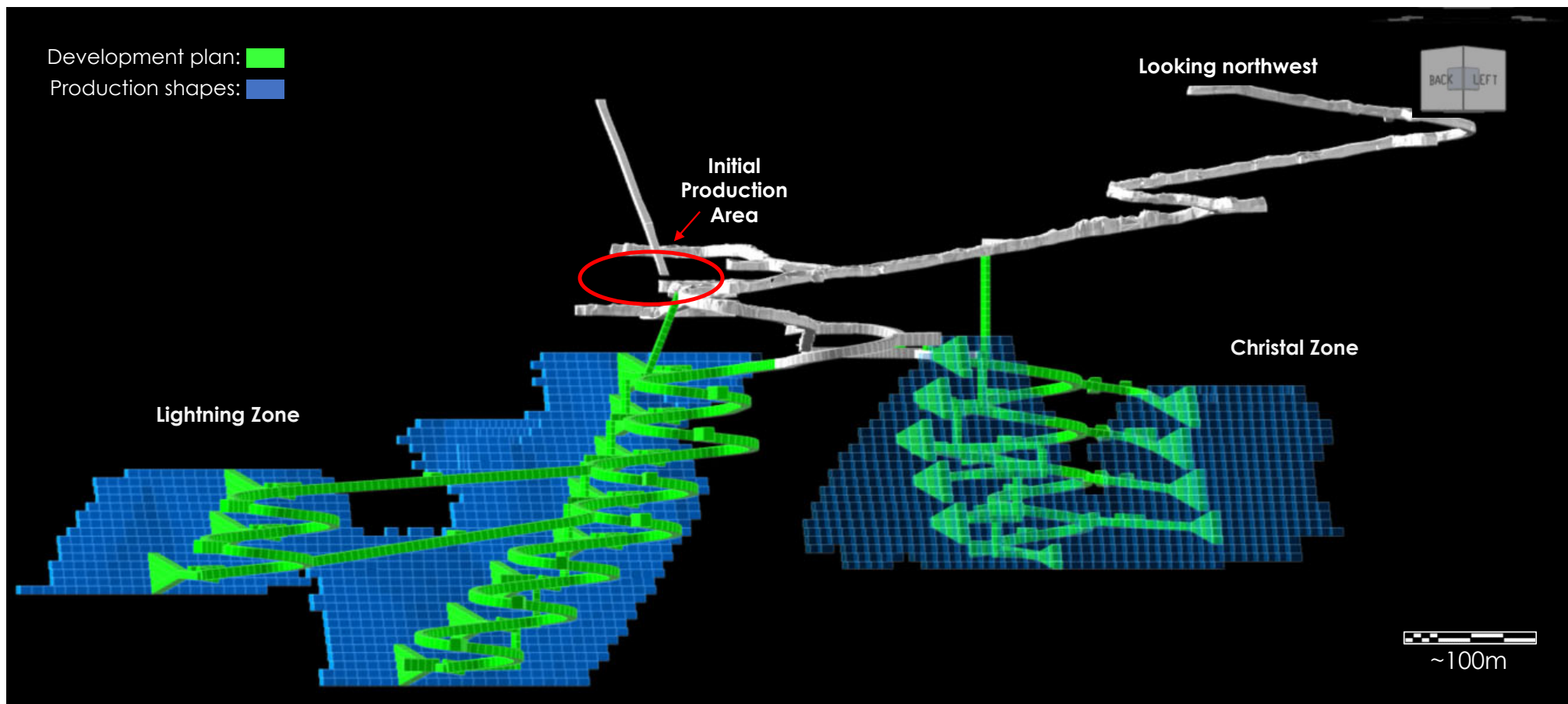
KENO HILL



DEVELOPMENT – FLAME & MOTH

HECLA MINING COMPANY
NYSE: HL

KENO HILL



CASA BERARDI: GOLD EXPOSURE IN QUEBEC

HECLA MINING COMPANY
NYSE: HL

CASA BERARDI

Location: Quebec, Canada
Type: Open Pit/Underground
Metals: Gold

Gold Reserves: 1.3Moz at 0.08 opt
Mine Plan: 14 Years

Energy Use: 100% of electricity is
from renewable hydropower

2022 Direct Local Economic Impact:
\$279M



CASA BERARDI: EXECUTING ON SURFACE TRANSITION PLAN

HECLA MINING COMPANY
NYSE: HL

CASA BERARDI

Technical report demonstrates long-term value in pits with a 14-year reserve mine plan

- Transition to complete surface operation by mid-2024 is exceeding cost and tonnage expectations
- Free cash flow generation in aggregate from 2024 – 2027*
 - Investment required in 2024; 2024 – 2027 free cash flow generation of \$82M*
- After-tax NPV (5%) of \$347M*

* Technical report filed on February 15th, 2024, at \$1,950/oz gold



2023 Performance and Guidance

		Q3 2023	YTD 2023	2023 Guidance
Gold Produced	Koz	24.3	67.8	85 - 95
Total Cost of Sales ⁽⁷⁾	\$ mm	\$56.8	\$162.4	\$215
Capital Additions*	\$ mm	\$16.2	\$54.1	\$72 - \$74
Cash Cost ⁽⁵⁾	\$/Au oz	\$1,475	\$1,635	\$1,600 - \$1,800
AISC ⁽⁴⁾	\$/Au oz	\$1,695	\$2,075	\$2,000 - \$2,250

* Net of finance leases

OPEN PIT TRANSITION CAN UNLOCK SIGNIFICANT VALUE

HECLA MINING COMPANY
NYSE: HL

CASA BERARDI

Casa Berardi: Conceptually divided in three phases*

I. Mining the F160 pit *Aggregate free cash flow generation expected*

- Closure of UG West Mine in 2024, 160 pit should operate until 2026
- Serves as a tailings facility for higher grade Principal and WMCP**
- Aggregate free cash flow positive from 2024-2027

II. Preparation for high-grade pits *Investment phase with production gap ~3 years*

- Invest in stripping, dewatering, permitting of higher-grade pits, mill, equipment
- 2028 - 2030 capital outlay of \$175 million

III. Mining higher-grade pits *Significant free cash flow generation after 2030*

- Higher grade pits start production in 2030
- Principal (2030 – 2034), and WMCP** (2030 – 2037)
- Reserve life until 2037
- Significant free cash flow generation after 2031 onwards

* Technical report filed on February 15th, 2024

** West Mine Crown Pillar

CASA BERARDI TECHNICAL REPORT HIGHLIGHTS

HECLA MINING COMPANY
NYSE: HL

CASA BERARDI



Reserves & Resources, as of 12/31/2023

	Tons (000)	Gold Grade (opt)	Gold (000 oz)
Reserves	15,854	0.08	1,271
Measured & Indicated	4,526	0.19	843
Inferred	2,303	0.17	396

*Comes from Technical report section 19.1.3 Capital Costs. Includes Growth and Sustaining capex

** Grade and recovery data from section 19 of the S-K 1300 technical report

Technical Report S-K 1300 Highlights

Mine life, based on reserve plan	years	14
Ore Milled	Tons (M)	15.8
Gold Grade (mined) – Open pit**	Opt	0.08
Gold Grade (mined) – Underground**	Opt	0.14
Gold Grade – Processed**	Opt	0.08
Gold Recovery**	%	81.6
Total Gold Produced	oz (000)	1,040

Financial Highlights (Gold \$1950/oz)**

Total Operating Costs**	\$/tonne milled	\$55
Total Capex*	\$M	\$498
NPV _{0%, after-tax}	\$M	\$585
NPV _{5%, after-tax}	\$M	\$347

MONTANA ASSETS: 3rd LARGEST UNDEVELOPED COPPER DEPOSIT IN THE U.S.

HECLA MINING COMPANY
NYSE: HL

FEBRUARY 2024 UPDATE

Located 50 miles from Lucky Friday with great exploration potential

Permitting strategy

- Executing strategy to expedite authorization for underground evaluation and data collection at Libby Exploration project (Montanore) via existing infrastructure
- Focus on permitting additional underground evaluation work on private land at existing Libby Exploration site
- Proposed evaluation project has very low environmental impact
- Although not currently advancing Rock Creek, common ownership of both ore bodies provides optionality not available to previous proponents

Working to advance underground data collection and permitting

Overview and Inferred Resources (as of 12/31/22)

	Rock Creek	Libby Exploration Project
Silver	148.7 Moz	183.3 Moz
Copper	1.3 Blbs	1.5 Blbs
Potential Mine Life	20-30 years each	
Acquisition Cost	\$46 M	\$19 M

~330 Moz

Total silver ounces in inferred resources for Rock Creek and Montanore. Combined, the projects are larger than Hecla's current reserves



FINANCIAL REVIEW

RESPONSIBLE. SAFE. INNOVATIVE.

2023 FINANCIAL HIGHLIGHTS

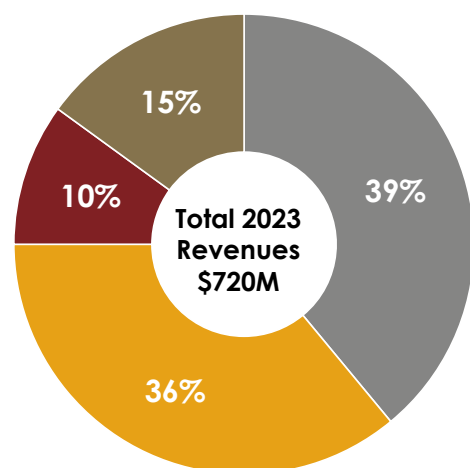
HECLA MINING COMPANY
NYSE: HL

FEBRUARY 2024 UPDATE

2023 Revenues By Metal

2nd highest revenues in history

■ Silver ■ Gold ■ Lead ■ Zinc

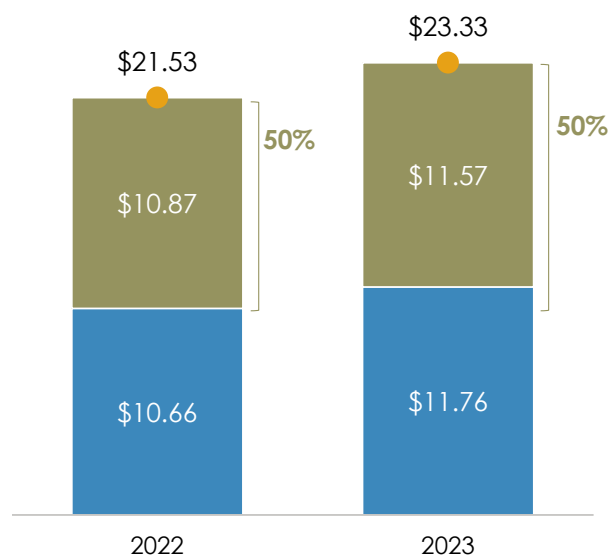


Strong Silver Margins

(\$/silver ounce)

Margins are 50% of silver price

■ Realized Price Margin (4)
■ AISC (4)
● Realized Silver Price (3)

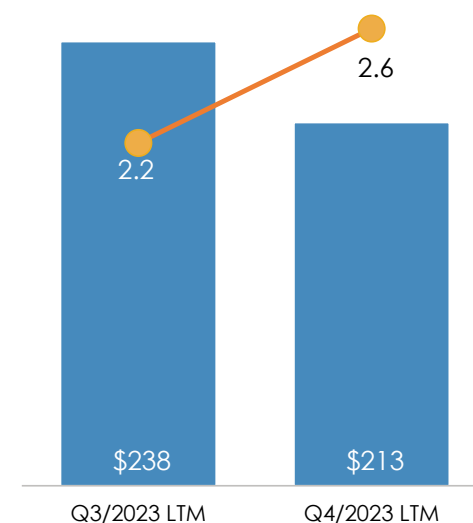


Net Debt to Adjusted EBITDA

(\$ Million)

2024: Achieve target of < 2x

■ Adjusted EBITDA (1)
● Net Leverage Ratio (1)



INVESTING FOR PRODUCTION GROWTH

HECLA MINING COMPANY
NYSE: HL

FEBRUARY 2024 UPDATE

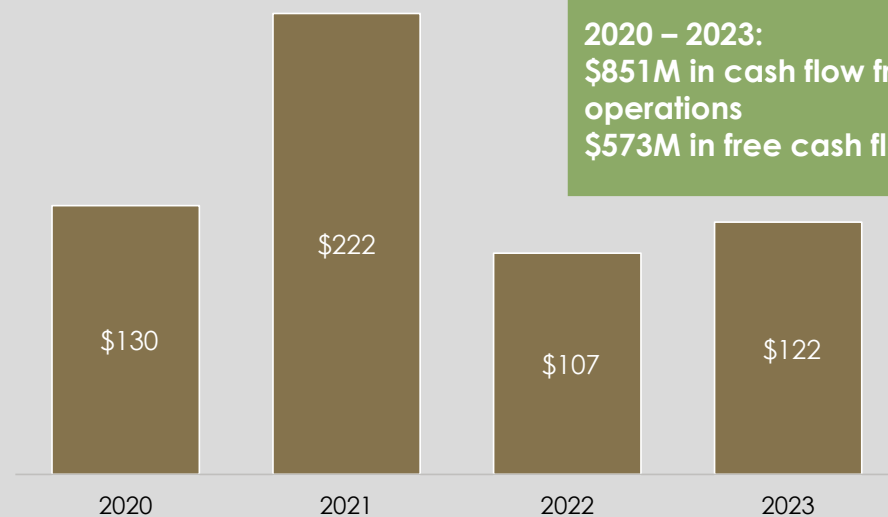
Strong free cash flow generation from silver operations invested in production growth

- Capital investment drives 15-20% growth in 2024, 30% by 2026
- Expect continued free cash flow generation from silver operations
- 2024 priority to reduce revolver debt

Free Cash Flow: Greens Creek, Lucky Friday

(\$ Million)

■ Free Cash Flow (2)

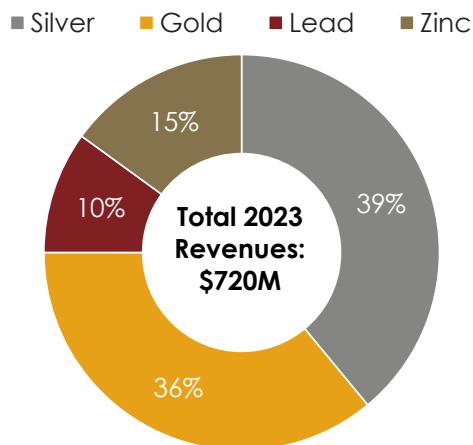


2023 REVENUE, PRODUCTION, AND COST HIGHLIGHTS

HECLA MINING COMPANY
NYSE: HL

FEBRUARY 2024 UPDATE

**Total 2023 Silver
Margins⁽³⁾: \$11.57/oz**

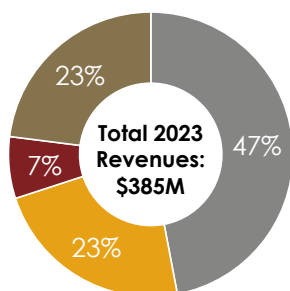


Silver Production: **14.3Moz**
Total Cost of Sales⁽⁷⁾: **\$379.6M**
Cash Costs, after by-product credits⁽⁵⁾: **\$3.23/oz**
AISC, after by-product credits⁽⁴⁾: **\$11.76/oz**
Realized Price: **\$23.33/oz**

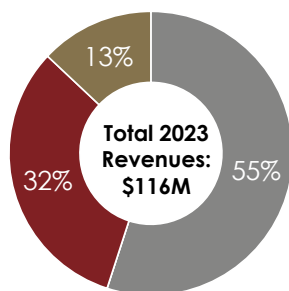
Gold Production: **151.3Koz**
Total Cost of Sales⁽⁷⁾: **\$227.7M**
Cash Costs, after by-product credits⁽⁵⁾: **\$1,652/oz**
AISC, after by-product credits⁽⁴⁾: **\$2,048/oz**
Realized Price: **\$1,939/oz**

Lead Production: **40.3 Ktons**
Realized Price: **\$1.03/lb.**

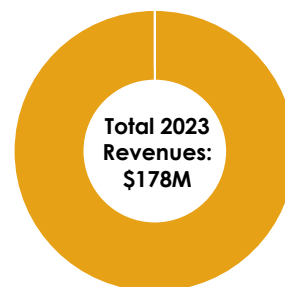
Zinc Production: **60.6 Ktons**
Realized Price: **\$1.35/lb.**



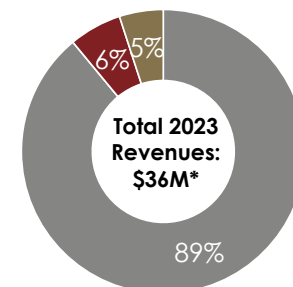
Greens Creek: 53% of Total Revenue



Lucky Friday: 16% of Total Revenue



Casa Berardi: 25% of Total Revenue



Keno Hill: 5% of Total Revenue

⁽³⁾Cash Costs after by-product credits, AISC after by-product credits and Margins are non-GAAP measures. Reconciliation to GAAP is provided in the appendix. Silver Margin for is calculated as Realized Silver Price of \$23.33/oz less AISC, after by-product credits of \$11.76/oz
* Keno Hill excludes revenue from ERDC of about \$5M.

GUIDANCE

RESPONSIBLE. SAFE. INNOVATIVE.



GUIDANCE – STRONG SILVER PRODUCTION GROWTH

HECLA MINING COMPANY
NYSE: HL

FEBRUARY 2024 UPDATE

15-20% Silver production growth in 2024, 30% by 2026

Consolidated Production Guidance		Silver Production (Moz)	Gold Production (Koz)	Silver Equivalent (Moz)	Gold Equivalent (Koz)
	2024 Total	16.5 - 17.5	121.0 – 133.0	40.0 – 42.2	455 – 480
	2025 Total	17.0 – 18.5	110.0 – 125.0	39.0 – 42.0	445 – 485
	2026 Total	18.0 – 20.0	110.0 – 120.0	40.0 – 43.0	465 – 495

2024 Consolidated Cost Guidance*		Costs of Sales (million)	Cash cost, after by-product credits, per silver/gold ounce ³	AISC, after by-product credits, per produced silver/gold ounce ⁴
	Total Silver	382	\$3.00 - \$3.75	\$13.00 - \$14.50
	Total Gold	200	\$1,500 - \$1,700	\$1,750 - \$1,975

2024 Capital and Exploration Guidance	(millions)	Total	Sustaining	Growth
	Capital expenditures	\$190 - \$210	\$122 - \$132	\$68 - \$78
	Exploration	\$25		
	Pre-development expenditures	\$6.5		

* Production and cost outlook by mine available in the appendix

GUIDANCE – 2024 PRODUCTION AND COSTS BY OPERATION

HECLA MINING COMPANY
NYSE: HL

FEBRUARY 2024 UPDATE

2024 Production Guidance		Silver Production (Moz)	Gold Production (Koz)	Silver Equivalent (Moz) ⁶	Gold Equivalent (Koz) ⁶
	Greens Creek *	8.8 – 9.2	46.0 - 51.0	21.0 – 21.5	235 – 245
	Lucky Friday *	5.0 – 5.3	N/A	9.5 – 10.0	115 – 115
	Casa Berardi	N/A	75.0 – 82.0	6.5 – 7.2	75 – 82
	Keno Hill *	2.7 – 3.0	N/A	3.0 – 3.5	36 – 40
	Total	16.5 – 17.5	121.0 – 133.0	40.0 – 42.2	455 - 482

2024 Consolidated Cost Guidance		Cost of Sales (million)	Cash cost, after by-product credits, per silver/gold ounce ³	AISC, after by-product credits, per produced silver/gold ounce ³
	Greens Creek	252	\$3.50 - \$4.00	\$9.50 - \$10.25
	Lucky Friday	130	\$2.50 - \$3.25	\$10.50 - \$12.25
	Total Silver	382	\$3.00 - \$3.75	\$13.00 - \$14.50
	Casa Berardi	200	\$1,500 - \$1,700	\$1,750 - \$1,975

2024E Capital and Exploration Guidance	(millions)	Total	Sustaining	Growth
	Capital expenditures	\$190 - \$210	\$122 - \$132	\$68 - \$78
	Greens Creek	\$59 - \$63	\$56 - \$58	\$3 - \$5
	Lucky Friday	\$45 - \$50	\$42 - \$45	\$3 - \$5
	Casa Berardi	\$56 - \$63	\$14 - \$17	\$42 - \$46
	Keno Hill	\$30 - \$34	\$10 - \$12	\$20 - \$22
	Exploration	\$25		
	Pre-development expenditures	\$6.5		

* Equivalent ounces include lead and zinc production



SILVER MARKET

RESPONSIBLE. SAFE. INNOVATIVE.

THE WORLD'S GROWING NEEDS FOR SILVER

HECLA MINING COMPANY
NYSE: HL

FEBRUARY 2024 UPDATE

Five distinct periods of silver demand, three that are strengthening

- Monetary by governments (2000 BC to 1936 AD)
- Photographic (1900 to 1999)
- Industrial (**1940 to present**)
- Investment (**2000 to present**)
- Energy (**2010 to present**)

Industrial and Investment demand for silver has been in a secular bull market since 2000, with a strong outlook in 2023 and beyond

Despite decrease in photographic demand, total demand increased 40%, or 345Moz due to the increase in industrial and investment demand

23-Year Change in Demand (Moz)

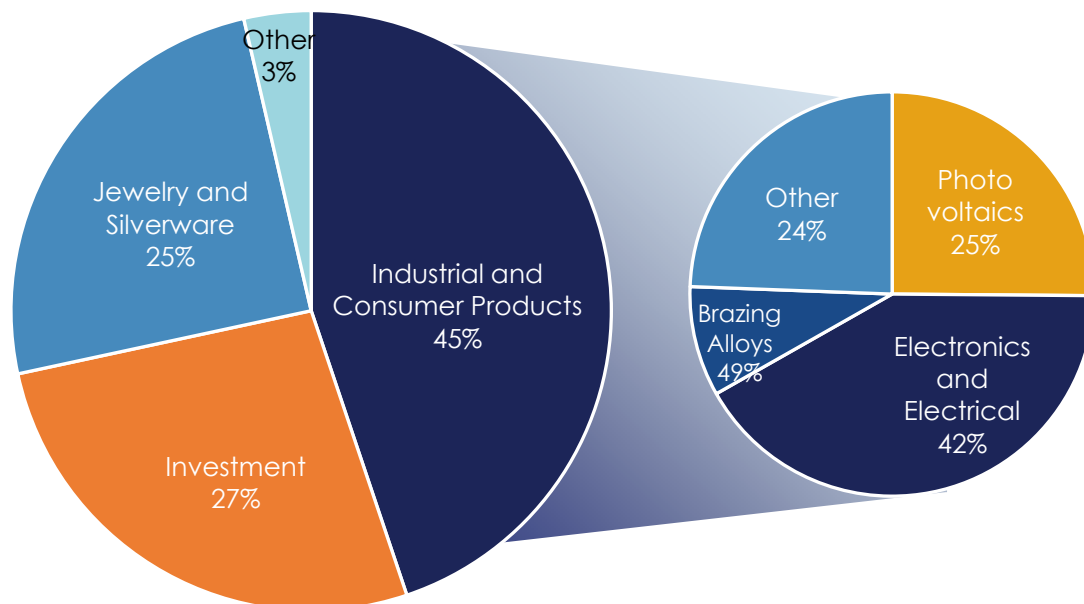
	1999	2022	% Change
Industrial	343	557	62%
Photography	246	28	(89%)
Jewelry/Silverware	261	308	18%
Investment	26	333	1,181%
Producer hedging	11	18	64%
Total	888	1,242	40%

SILVER SUPPLY AND DEMAND

HECLA MINING COMPANY
NYSE: HL

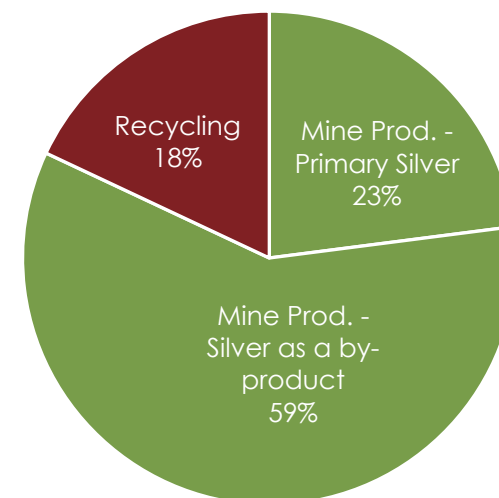
FEBRUARY 2024 UPDATE

2022 SILVER DEMAND: 1,242MOZ



Green energy demand (solar, EVs) is new and growing.
Solar: **12%** Compound Annual Growth Rate from 2013-2022

2022 SILVER SUPPLY: 1,005MOZ



Mine Production accounts for **80%** of total supply

* Industrial demand includes photography demand. Source: World Silver Survey 2023

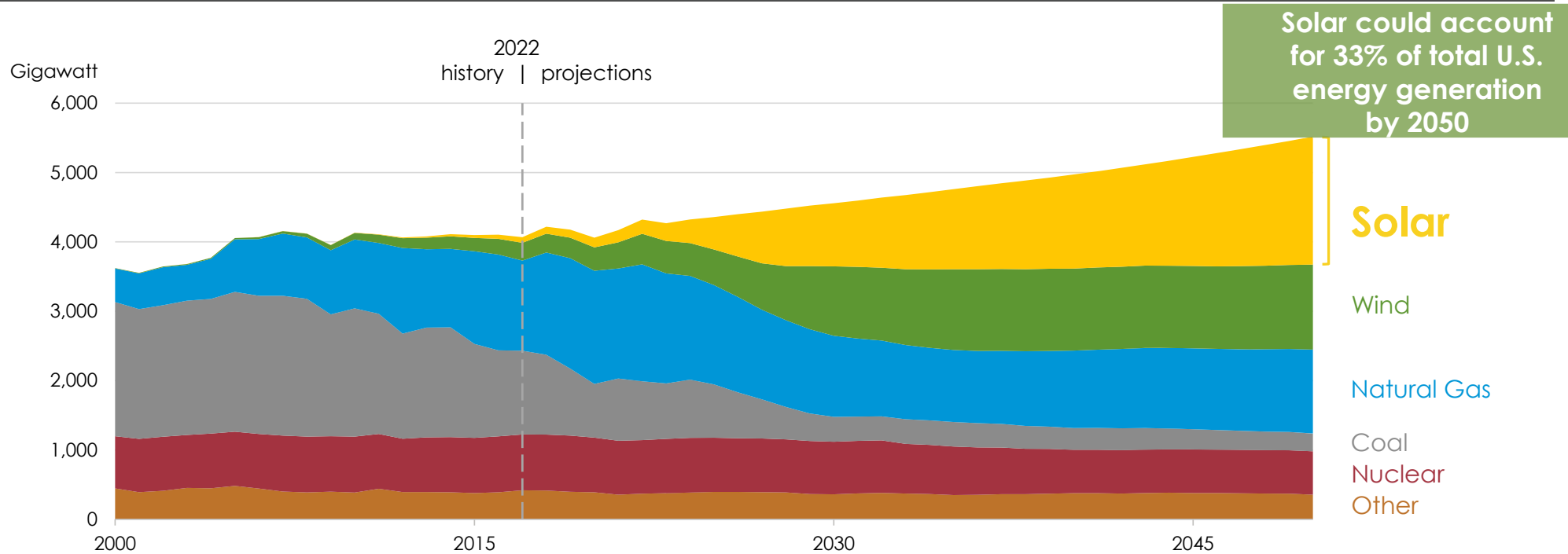
SILVER IS ESSENTIAL IN SOLAR ELECTRICITY GENERATION

HECLA MINING COMPANY
NYSE: HL

FEBRUARY 2024 UPDATE

1 GW of solar capacity requires 0.5Moz of silver

U.S. Electricity Generation by Fuel: 2000-2050



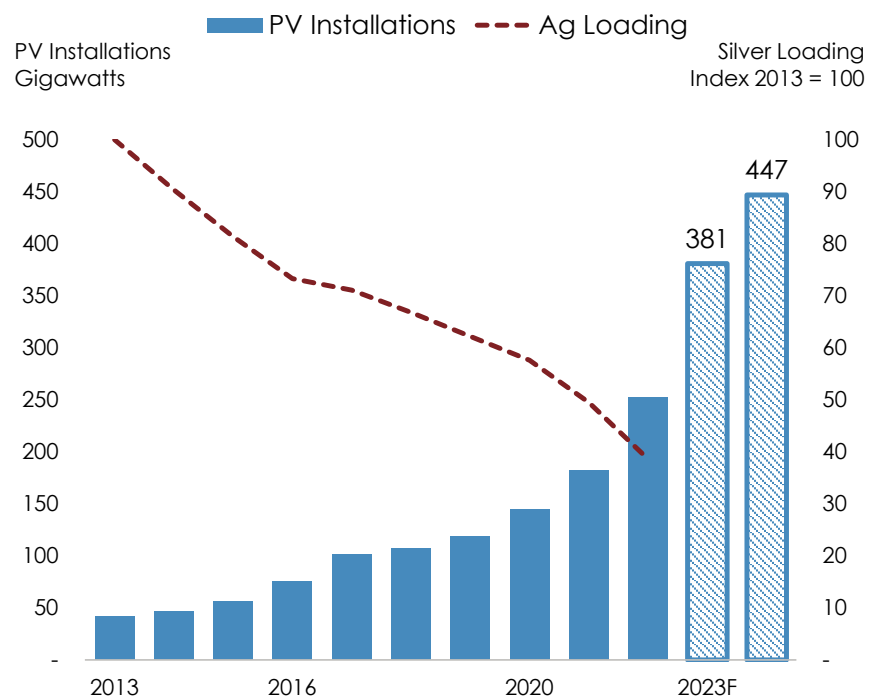
Source: U.S. Energy Information Administration, Energy Trends 2023 (AEO2023) Reference Case

PHOTOVOLTAIC (PV) DEMAND FOR SILVER IS GROWING

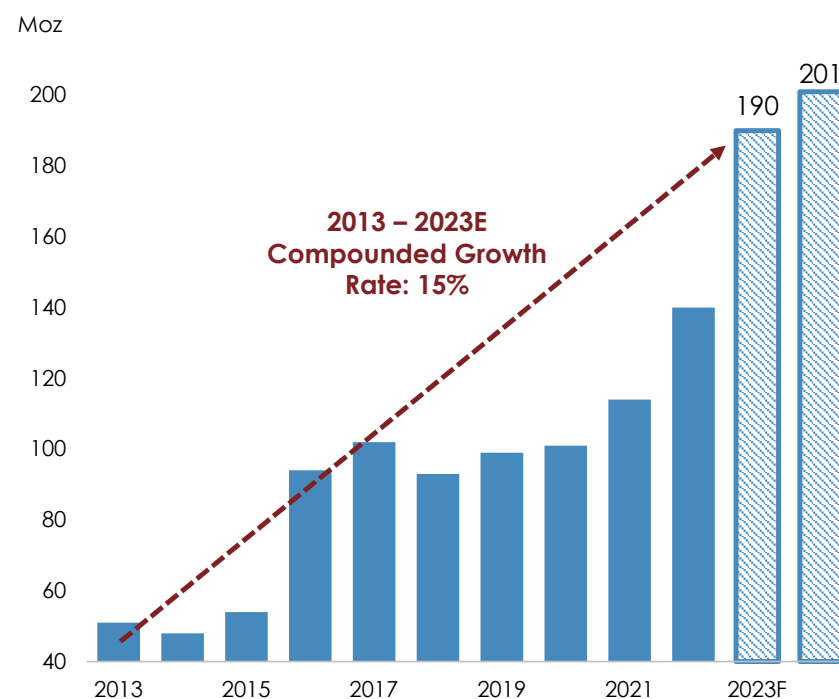
HECLA MINING COMPANY
NYSE: HL

FEBRUARY 2024 UPDATE

PV Installations (Gigawatts) and Silver Loadings*,**



Silver Used in PVs, 2013-2024F**



* Source: Metals Focus January 2022

** 2023 and 2024 data from Bloomberg estimates based on GW capacity installed (Assumes 1 GW capacity uses 0.45Moz of silver)

SILVER DEFICIT IS EXPECTED TO CONTINUE

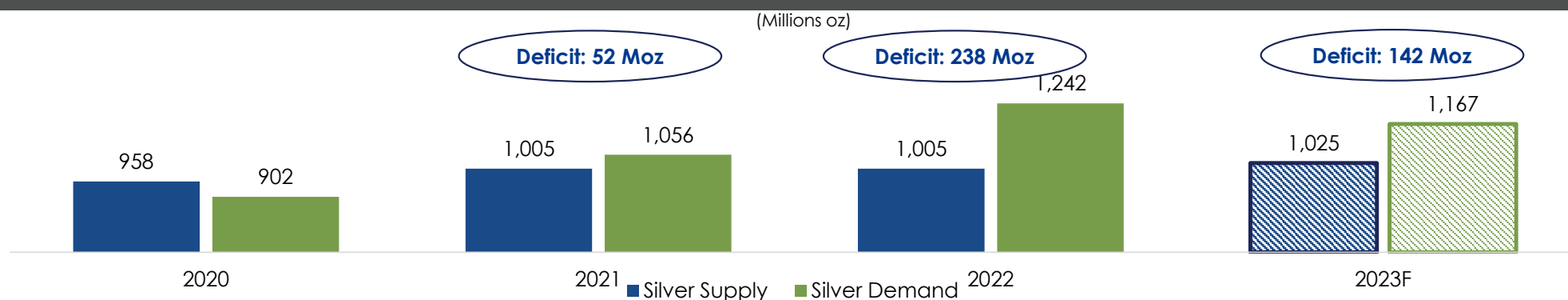
HECLA MINING COMPANY
NYSE: HL

FEBRUARY 2024 UPDATE

Silver demand is buoyed by PVs with newer silver technologies that use more silver

- In 2022, silver deficit was 238Moz, 2023 forecast deficit is 142Moz*
- Expect silver deficit to persist with increasing use of PVs,
 - ✓ Globally, in 2023, solar accounted for 75% of renewable capacity additions worldwide (380 GW solar)**
 - ✓ Newer PV technologies (TOPCon, HJT) use 30-120% more silver than the current technology (PERC)
 - ✓ Newer technologies expected to account for ~80% of new builds starting in 2023

Silver: Supply and Demand*



* Source: World Silver Survey 2023

** International Energy Administration, Report 'Renewables 2023', published January 12th, 2024

WIDENING GAP BETWEEN SILVER SUPPLY AND DEMAND

HECLA MINING COMPANY
NYSE: HL

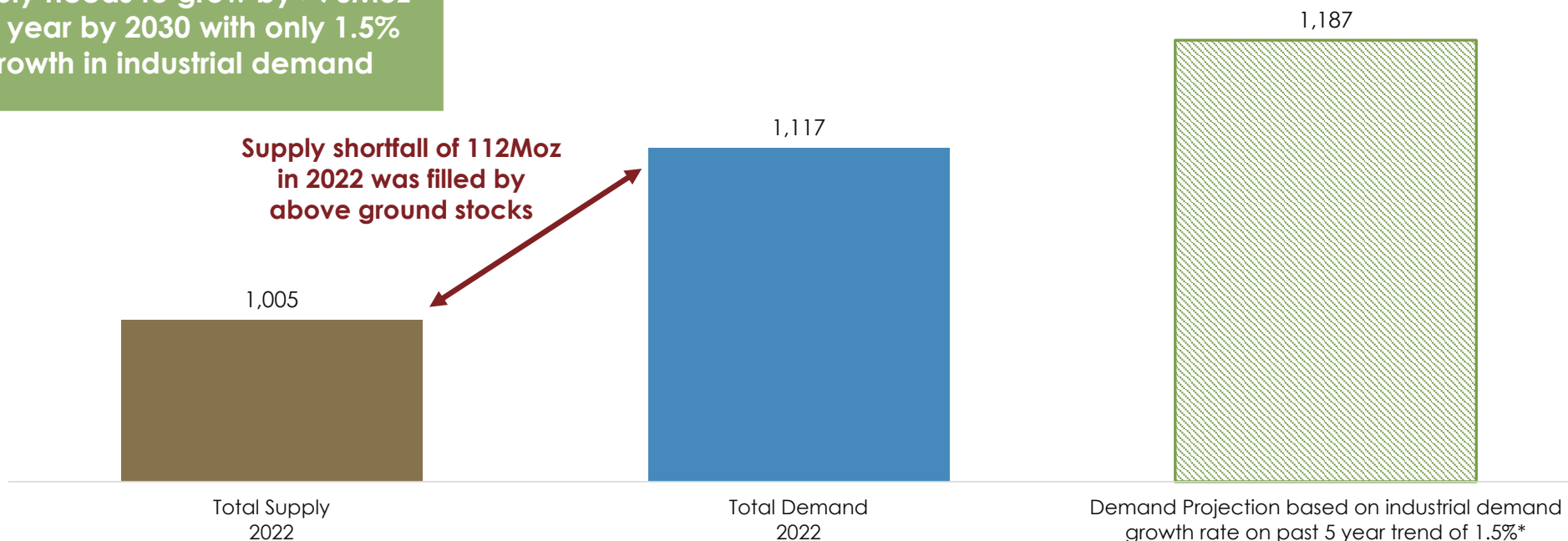
FEBRUARY 2024 UPDATE

Silver Supply and Demand: 2022 and 2030E

(Millions oz)

Supply needs to grow by >70Moz per year by 2030 with only 1.5% growth in industrial demand

Supply shortfall of 112Moz in 2022 was filled by above ground stocks



* Demand assumptions: CAGR for industrial demand over the past 5 years has been ~1.5%. Assume no increase or decrease in investment, jewelry or silverware demand from 2022
Source for 2022 data – Silver Institute

EXPLORATION

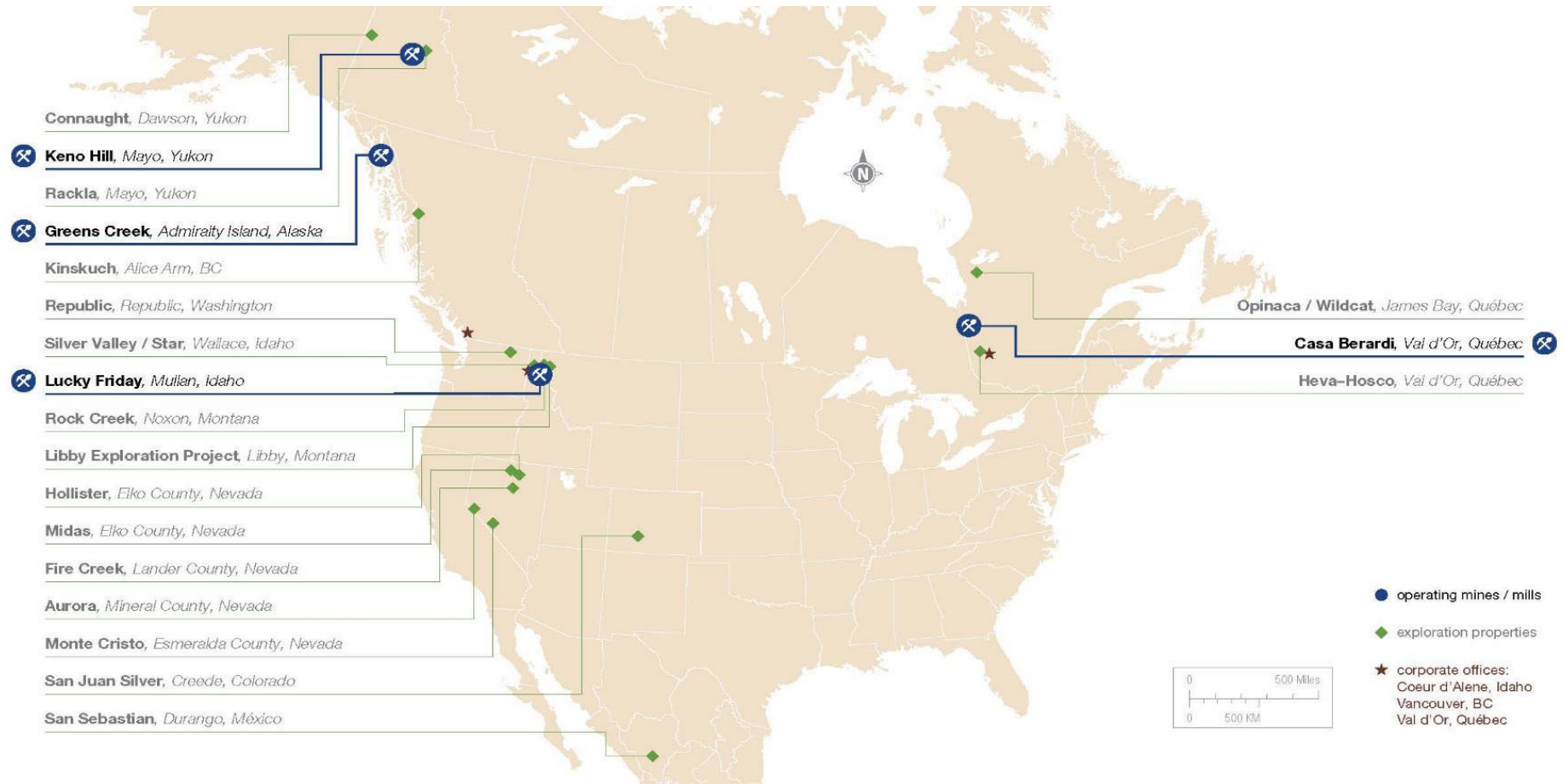
RESPONSIBLE. SAFE. INNOVATIVE.



UNIQUE EXPLORATION DUE TO SILVER, JURISDICTIONS, INFRASTRUCTURE, POTENTIAL, GRADE, AND CAPITAL

HECLA MINING COMPANY
NYSE: HL

FEBRUARY 2024 UPDATE



DISCOVERING AND EXPANDING RESOURCES

HECLA MINING COMPANY
NYSE: HL

FEBRUARY 2024 UPDATE

\$25M

Exploration Budget
for 2024, focused on
Greens Creek and
Keno Hill

Greens Creek (\$9M)

Focus on resource expansion and conversion to expand and upgrade multiple ore zones



Keno Hill (\$6.5M)

Exploration and definition drilling at Bermingham, Exploration drilling in underexplored areas



2023 EXPLORATION EXPANDS MINERALIZATION IN MULTIPLE ZONES

HECLA MINING COMPANY
NYSE: HL

GREENS CREEK

Positive Results at 9a, West, 200 South, East, Gallagher, and Upper Plate Zones

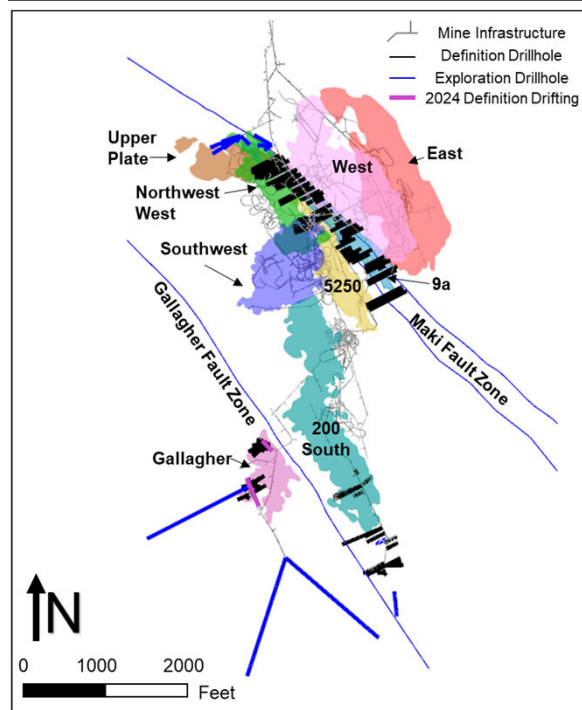
2023 Drilling Results

- Expanding high-grade mineralization to the west in 9a and West ore zones
- Expanding mineralization in the Upper Plate Zone to the north and west of existing resource
- Establishing continuity of ore grade mineralization over 400 feet of strike length in the 200 South Zone

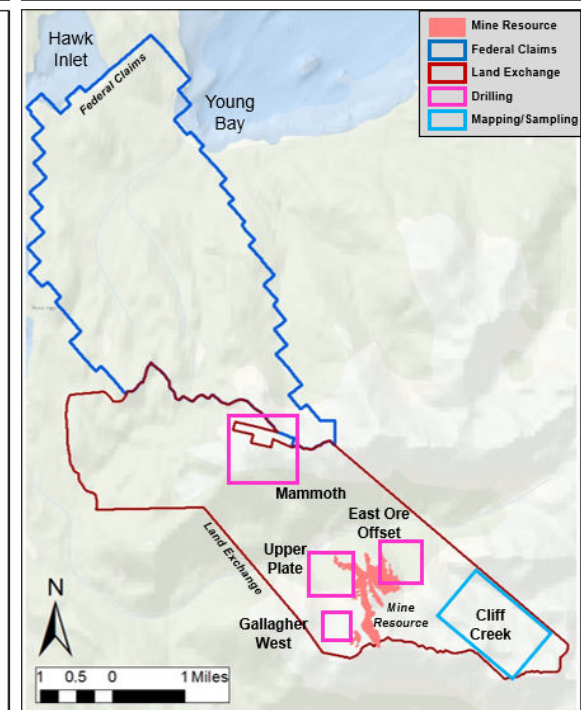
2024 Planned Exploration Drilling - \$9M Budget

- Exploring for large offset segments in the East Ore Offset and the Gallagher West target areas
- Follow-up drilling on the Upper Plate Zone open to the west and north of the current resource
- Initial drill testing of the Mammoth target area

2024 Underground



2024 Surface



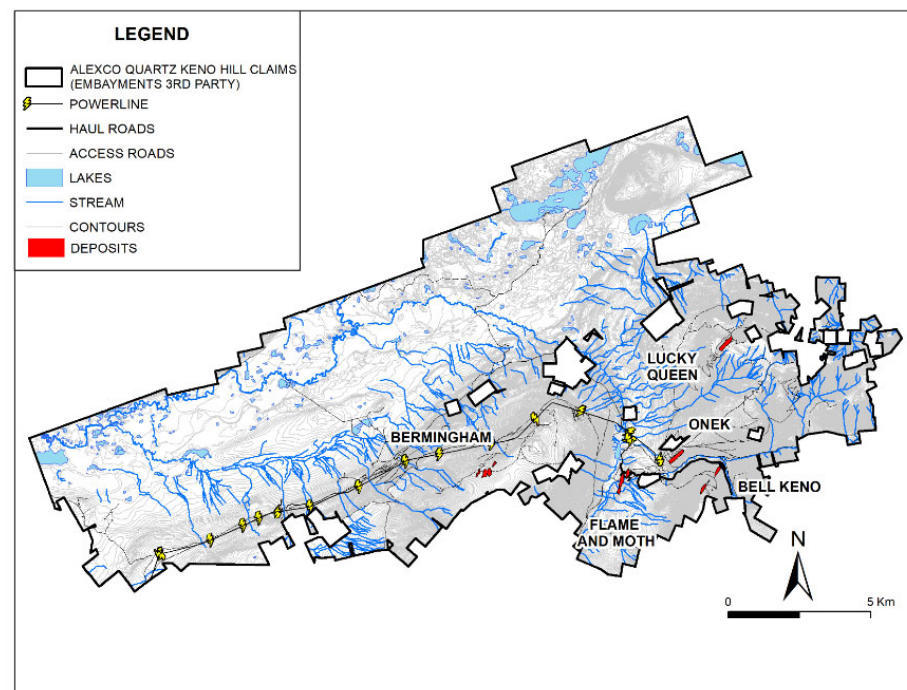
PROSPECTIVE LAND PACKAGE IN A HISTORICAL DISTRICT

HECLA MINING COMPANY
NYSE: HL

KENO HILL

- Historical production of over 200Moz of silver at 40 oz/Ag per ton
 - ✓ Grades are 2x Greens Creek's historical grades
- Property contains excellent exploration potential to host deposits similar in size and grade to the Hector-Calumet, Birmingham, or Flame & Moth deposits
- Numerous untested or inadequately tested exploration targets occur throughout district
- \$6.5M budgeted for exploration in 2024

Silver District: Excellent Potential



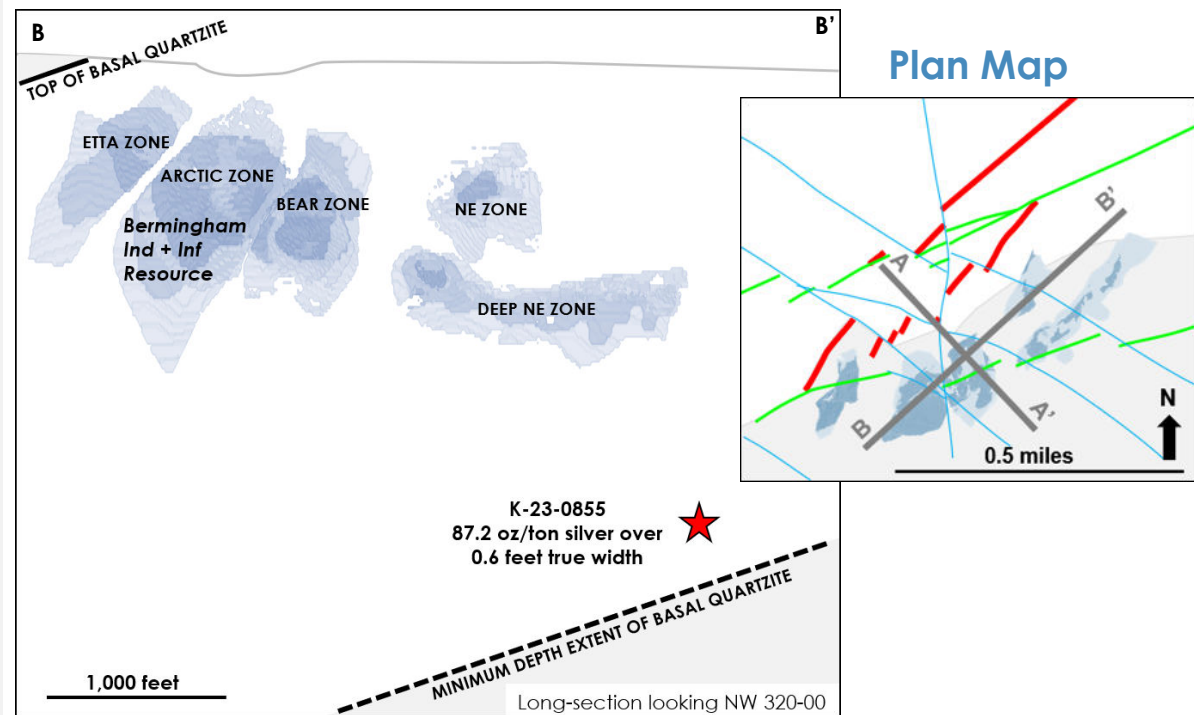
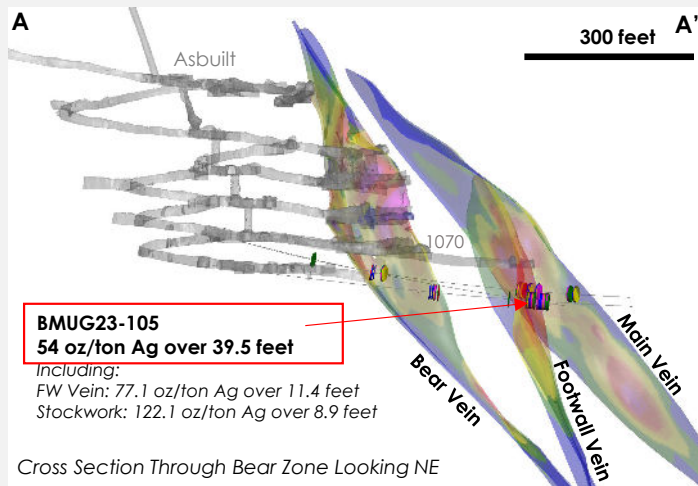
EXPLORATION DRILLING CONFIRMS SIGNIFICANT POTENTIAL

HECLA MINING COMPANY
NYSE: HL

KENO HILL

Multiple intercepts significantly extend wider and high-grade mineralization internal to and at depth below current planned mining

- Three veins in Bermingham deposit – Bear, Footwall, Main
- Width and grade of mineralization exceed model expectations





Environmental, Social, Governance

Our sustainable ESG Corporate
Governance responsibilities

RESPONSIBLE. SAFE. INNOVATIVE.

COMMITTED TO RESPONSIBLE MINING

HECLA MINING COMPANY
NYSE: HL

FEBRUARY 2024 UPDATE

Mining Metals for a Green Energy Future

Well-established safety culture

Casa Berardi received the
John T. Ryan Safety Award**

2022 All-injury Frequency Rate is
42% lower than the U.S. average

Safety



**Net zero on emissions in 2021, 2022
and 2023***

San Sebastian Mine received the
**Environmental and Sustainability
Excellence Award of 2022*****

Low water use of 76 gallons per ounce
produced vs. an average
person/day (100 gal.)

Small Environmental Footprint



Hecla Charitable Foundation

Largest private-sector
employer and taxpayer in
Juneau, Alaska

**2022 direct economic impact of
\$833 million** in wages, vendor
payments, and taxes

Large Community Benefit



* On scope 1 & 2 emissions, and through the purchase of carbon offset credits.

**Given by the Canadian Institute of Mining, Metallurgy, and Petroleum (CIM) for the lowest reportable injury frequency rate in the Quebec/Maritime region.

***Given by the American Exploration & Mining Association (AEMA) in recognition of Hecla's strong commitment to the highest environmental and sustainability standards.

SUSTAINABILITY RATING AGENCY SCORES: SIGNIFICANT IMPROVEMENTS SINCE 2019

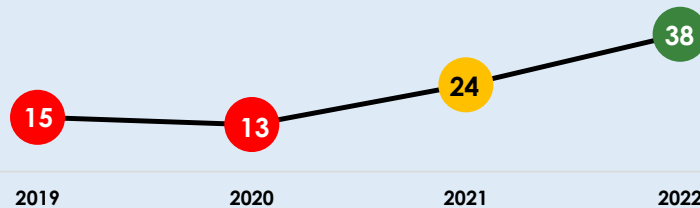
HECLA MINING COMPANY
NYSE: HL

FEBRUARY 2024 UPDATE

Agency

Progression in ESG Scores

S&P Global



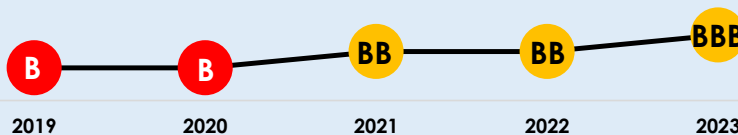
- Overall Score increased from 53rd percentile to **74th percentile**
- Governance Score increased to **78th percentile**
- Environmental Score increased to **72nd percentile**
- Social Score increased to **71st percentile**

SUSTAINALYTICS
a Morningstar company



- Sustainalytics Risk Rating **Improved (decreased) from 59 to 32.8**

MSCI



- Improvements in Hecla's corporate governance drives the upgrade.

ISS



- **Improved year over year** in all areas with a large boost to the Social score
- Overall Rating on pace with industry average

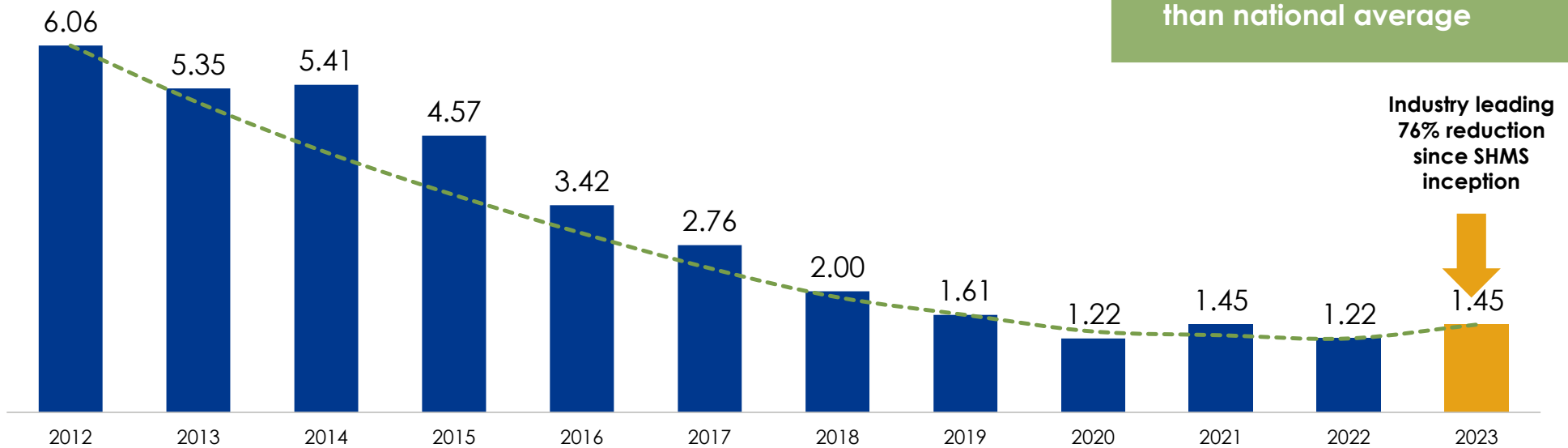
HECLA IS AMONG THE SAFEST MINING COMPANIES

HECLA MINING COMPANY
NYSE: HL

FEBRUARY 2024 UPDATE

Implemented NMA's CORESafety standards in 2012, became Industry leader

All-Injury Frequency Rate



COMMITTED TO OUR COMMUNITIES

HECLA MINING COMPANY
NYSE: HL

FEBRUARY 2024 UPDATE

Largest private employer within the communities we operate, jobs and benefits that last a lifetime

- Total direct economic impact of \$833 million
- More than \$845K in scholarships and donations
- More than a living wage – longevity, benefits

Total economic impact in 2022

\$833M



APPENDIX

End Notes and GAAP reconciliations

RESPONSIBLE. SAFE. INNOVATIVE.



END NOTES

HECLA MINING COMPANY
NYSE: HL

FEBRUARY 2024 UPDATE

1. Net debt to adjusted EBITDA is a non-GAAP measurement, a reconciliation of adjusted EBITDA and net debt to the closest GAAP measurements of net income (loss) and debt can be found in the appendix. It is an important measure for management to measure relative indebtedness and the ability to service the debt relative to its peers. It is calculated as total debt outstanding less total cash on hand divided by adjusted EBITDA.
2. Free cash flow is a non-GAAP measure and is calculated as cash flow from operations less additions to property, plant and equipment net of finance leases. Reconciliation to GAAP is shown in the appendix.
3. Realized silver margin is a non-GAAP measure and is calculated as realized market price of silver less AISC.
4. All-in sustaining cost ("AISC"), after by-product credits, is a non-GAAP measurement, a reconciliation of which to total cost of sales, the closest GAAP measurement, can be found in the appendix. AISC, after by-product credits, includes total cost of sales and other direct production costs, expenses for reclamation and exploration, and sustaining capital costs at the mine sites. AISC, after by-product credits, for our consolidated silver properties also includes corporate costs for all general and administrative expenses, exploration and sustaining capital which support the operating properties. AISC, after by-product credits, is calculated net of depreciation, depletion, and amortization and by-product credits. Current GAAP measures used in the mining industry, such as cost of goods sold, do not capture all the expenditures incurred to discover, develop and sustain silver and gold production. Management believes that all in sustaining costs is a non-GAAP measure that provides additional information to management, investors and analysts to help in the understanding of the economics of our operations and performance compared to other producers and in the investor's visibility by better defining the total costs associated with production. Similarly, the statistic is useful in identifying acquisition and investment opportunities as it provides a common tool for measuring the financial performance of other mines with varying geologic, metallurgical and operating characteristics. In addition, the Company may use it when formulating performance goals and targets under its incentive program.
5. Cash cost, after by-product credits, per silver and gold ounce represents a non-GAAP measurement, a reconciliation of which to total cost of sales and other direct production costs and depreciation, depletion and amortization (sometimes referred to as "total cost of sales" in this presentation), can be found in the Appendix. It is an important operating statistic that management utilizes to measure each mine's operating performance. It also allows the benchmarking of performance of each mine versus those of our competitors. As a primary U.S. silver mining company, management also uses the statistic on an aggregate basis – aggregating the Greens Creek, Lucky Friday and San Sebastian mines – to compare performance with that of other primary silver mining companies. With regard to Casa Berardi, management uses cash cost, after by-product credits, per gold ounce to compare its performance with other gold mines. Similarly, the statistic is useful in identifying acquisition and investment opportunities as it provides a common tool for measuring the financial performance of other mines with varying geologic, metallurgical and operating characteristics. In addition, the Company may use it when formulating performance goals and targets under its incentive program.
6. Silver and gold equivalent (include zinc and lead production) is calculated using the average market prices for the time period noted.
7. Total cost of sales and other direct production costs and depreciation, depletion and amortization, and excludes ramp-up and suspension costs.
8. 2024E refers to Hecla's estimates for 2023. Expectations for 2023 include silver, gold, lead and zinc production from Greens Creek, Lucky Friday, Keno Hill, and Casa Berardi converted using Au \$1,950/oz, Ag \$22.50/oz, Zn \$1.20/lb, and Pb 0.95\$/lb, for equivalent ounce calculations and by-product credit calculations.

A photograph of an industrial facility, likely a steel mill, featuring large yellow cylindrical components and a worker in safety gear. The scene is dimly lit with industrial lighting.

GAAP RECONCILIATIONS

RESPONSIBLE. SAFE. INNOVATIVE.

ADJUSTED EBITDA RECONCILIATION TO GAAP

HECLA MINING COMPANY
NYSE: HL

FEBRUARY 2024 UPDATE

Reconciliation of Net Loss (GAAP) to Adjusted EBITDA (non-GAAP)

Last Twelve Months	Q4 2023	Q3 2023
<i>Dollars in thousands (USD)</i>		
Net loss	\$ (84,217)	\$ (45,734)
Interest expense	43,319	42,194
Income and mining tax expense	1,222	2,980
Depreciation, depletion and amortization	163,672	149,281
Foreign exchange loss	3,810	466
Fair value adjustments, net	(2,925)	(4,211)
Ramp-up and suspension costs	76,252	56,259
Provisional price gains	(18,230)	(12,925)
Loss on disposition of properties, plants, equipment and mineral interests	849	(194)
Stock-based compensation	6,598	6,836
Provision for closed operations and environmental matters	7,575	10,152
Monetization of zinc hedges	(4,447)	15,970
Inventory adjustments	20,819	16,819
Other	(1,744)	260
Adjusted EBITDA	<u>\$ 212,553</u>	<u>\$ 238,153</u>
Total debt	\$ 662,815	\$ 616,246
Less: Cash and cash equivalents	<u>106,374</u>	<u>100,685</u>
Net debt	<u>\$ 556,441</u>	<u>\$ 515,561</u>
Net debt/LTM adjusted EBITDA (non-GAAP)	2.6x	2.2x

CASH COST AND AISC RECONCILIATION TO GAAP

HECLA MINING COMPANY
NYSE: HL

FEBRUARY 2024 UPDATE

Silver

Total Cost of Sales (GAAP) to Cash Cost, Before By-product Credits and Cash Cost, After By-product Credits (non-GAAP) and All-In Sustaining Costs, Before By-product Credits, per Ounce and All-In Sustaining Costs, After By-product Credits, per Ounce (non-GAAP)

	Q4 2023	Q3 2023	2024E	2023	2022	2021
<i>In thousands (except per ounce amounts)</i>						
Total cost of sales (GAAP)	\$ 91,284	\$ 90,677	\$ 381,400	\$ 379,598	\$ 349,316	\$ 310,898
Depreciation, depletion and amortization	(18,090)	(17,269)	(89,400)	(82,597)	(82,615)	(75,708)
Treatment costs	9,946	12,770	53,700	53,038	56,441	52,822
Change in product inventory	(3,638)	(2,073)	2,500	(9,430)	7,934	(326)
Reclamation and other costs	(534)	(516)	400	(1,574)	(2,523)	(4,600)
Cash costs excluded	(16,623)	(15,106)	-	(33,166)	-	-
Cash Cost, Before By-product Credits ⁽¹⁾	62,345	68,473	348,600	305,873	328,553	283,086
Reclamation and other costs	723	823	2,600	3,560	3,949	4,446
Sustaining capital	30,114	18,953	99,400	81,882	74,345	54,309
Exclusion of Lucky Friday sustaining capital	(14,768)	(4,934)	-	(19,702)	-	-
General and administrative	12,273	7,596	48,600	42,722	43,384	34,570
AISC, Before By-product Credits ⁽¹⁾	90,687	90,911	499,200	559,557	450,231	376,411
Total By-product credits	(51,199)	(59,283)	(302,700)	(265,328)	(299,406)	(265,592)
Cash Cost, After By-product Credits, per Silver Ounce	\$ 11.146	\$ 9.190	\$ 45.900	\$ 189.925	\$ 29.147	\$ 17.494
AISC, After By-product Credits	\$ 39.488	\$ 31.628	\$ 196.500	\$ 334.229	\$ 150.825	\$ 110.819
Divided by ounces produced	2,260	2,777	14,100	12,715	14,155	12,807
Cash Cost, Before By-product Credits, per Silver Ounce	\$ 27.59	\$ 24.66	\$ 24.72	\$24.06	\$23.21	\$22.11
By-product credits per Silver Ounce	(22.65)	(21.35)	(21.47)	(20.83)	(21.15)	(20.74)
Cash Cost, After By-product Credits, per Silver Ounce	\$ 4.94	\$ 3.31	\$ 3.26	\$ 3.23	\$ 2.06	\$ 1.37
AISC, Before By-product Credits, per Silver Ounce	\$ 40.13	\$ 32.74	\$ 35.40	\$ 32.59	\$ 31.80	\$ 29.39
By-products credit per Silver Ounce	(22.65)	(21.35)	(21.47)	(20.83)	(21.15)	(20.74)
AISC, After By-product Credits, per Silver Ounce	\$ 17.48	\$ 11.39	\$ 13.94	\$ 11.76	\$ 10.66	\$ 8.65
Realized Silver Price				\$ 23.33	\$ 21.53	
Silver Margin (Realized Silver Price - AISC)				\$ 11.57	\$ 10.87	

1. Includes all direct and indirect operating costs related to the physical activities of producing metals, including mining, processing and other plant costs, third-party refining and marketing expense, on-site general and administrative costs, royalties and mining production taxes, before by-product revenues earned from all metals other than the primary metal produced at each unit. AISC, Before By-product Credits also includes on-site exploration, reclamation, and sustaining capital costs.

CASH COST AND AISC RECONCILIATION TO GAAP

HECLA MINING COMPANY
NYSE: HL

FEBRUARY 2024 UPDATE

Greens Creek

Total Cost of Sales (GAAP) to Cash Cost, Before By-product Credits and Cash Cost, After By-product Credits (non-GAAP) and All-In Sustaining Costs, Before By-product Credits, per Ounce and All-In Sustaining Costs, After By-product Credits, per Ounce (non-GAAP)

	2023	Q4 2023	2024E
<i>In thousands (except per ounce amounts)</i>			
Total cost of sales (GAAP)	\$ 259,895	\$ 70,231	\$ 252,000
Depreciation, depletion and amortization	(53,995)	(15,438)	(53,000)
Treatment costs	40,987	9,873	38,000
Change in product inventory	(4,266)	(1,787)	2,500
Reclamation and other costs	(748)	(534)	400
Cash Cost, Before By-product Credits ⁽¹⁾	241,873	62,345	239,900
Reclamation and other costs	2,889	723	1,500
Sustaining capital	41,935	15,249	56,000
AISC, Before By-product Credits ⁽¹⁾	286,697	78,317	297,400
Total By-product credits	(217,245)	(51,199)	(208,800)
Cash Cost, After By-product Credits	\$ 24,628	\$ 11,146	\$ 31,900
AISC, After By-product Credits	\$ 69,452	\$ 27,118	\$ 89,400
Divided by ounces produced	9,732	2,260	9,000
Cash Cost, Before By-product Credits, per Silver Ounce	\$ 24.85	\$ 27.59	\$ 26.66
By-products credits per Silver Ounce	(22.32)	(22.65)	(23.11)
Cash Cost, After By-product Credits, per Silver Ounce	\$ 2.53	\$ 4.94	\$ 3.54
AISC, Before By-product Credits, per Silver Ounce	\$ 29.46	\$ 34.65	\$ 33.04
By-product credits per Silver Ounce	(22.32)	(22.65)	(23.11)
AISC, After By-product Credits, per Silver Ounce	\$ 7.14	\$ 12.00	\$ 9.93

1. Includes all direct and indirect operating costs related to the physical activities of producing metals, including mining, processing and other plant costs, third-party refining and marketing expense, on-site general and administrative costs, royalties and mining production taxes, before by-product revenues earned from all metals other than the primary metal produced at each unit. AISC, Before By-product Credits also includes on-site exploration, reclamation, and sustaining capital costs.

CASH COST AND AISC RECONCILIATION TO GAAP

HECLA MINING COMPANY
NYSE: HL

FEBRUARY 2024 UPDATE

Lucky Friday

Total Cost of Sales (GAAP) to Cash Cost, Before By-product Credits and Cash Cost, After By-product Credits (non-GAAP) and All-In Sustaining Costs, Before By-product Credits, per Ounce and All-In Sustaining Costs, After By-product Credits, per Ounce (non-GAAP)

	2023	2024E
<i>In thousands (except per ounce amounts)</i>		
Total cost of sales (GAAP)	\$ 84,185	\$ 129,400
Depreciation, depletion and amortization	(24,325)	(36,400)
Treatment costs	10,981	15,700
Change in product inventory	(5,164)	-
Reclamation and other costs	(826)	-
Exclusion of Lucky Friday cash costs	<u>(851)</u>	<u>-</u>
Cash Cost, Before By-product Credits ⁽¹⁾	64,000	108,700
Reclamation and other costs	671	1,100
Sustaining capital	39,019	43,400
Exclusion of Lucky Friday sustaining capital	<u>(19,702)</u>	<u>-</u>
AISC, Before By-product Credits ⁽¹⁾	83,988	153,200
Total By-product credits	<u>(47,561)</u>	<u>(94,700)</u>
Cash Cost, After By-product Credits, per Silver Ounce	<u>\$ 16,439</u>	<u>\$ 14,000</u>
AISC, After By-product Credits	<u>\$ 36,427</u>	<u>\$ 58,500</u>
Divided by ounces produced	2,983	5,100
Cash Cost, Before By-product Credits, per Silver Ounce	\$ 21.45	\$ 21.31
By-products credits per Silver Ounce	<u>(15.94)</u>	<u>(18.57)</u>
Cash Cost, After By-product Credits, per Silver Ounce	<u>\$ 5.51</u>	<u>\$ 2.75</u>
AISC, Before By-product Credits, per Silver Ounce	\$ 28.15	\$ 30.04
By-products credits per Silver Ounce	<u>(15.94)</u>	<u>(18.57)</u>
AISC, After By-product Credits, per Silver Ounce	<u>\$ 12.21</u>	<u>\$ 11.47</u>

1. Includes all direct and indirect operating costs related to the physical activities of producing metals, including mining, processing and other plant costs, third-party refining and marketing expense, on-site general and administrative costs, royalties and mining production taxes, before by-product revenues earned from all metals other than the primary metal produced at each unit. AISC, Before By-product Credits also includes on-site exploration, reclamation, and sustaining capital costs.

CASH COST AND AISC RECONCILIATION TO GAAP

HECLA MINING COMPANY
NYSE: HL

FEBRUARY 2024 UPDATE

Casa Berardi

Total Cost of Sales (GAAP) to Cash Cost, Before By-product Credits and Cash Cost, After By-product Credits (non-GAAP) and All-In Sustaining Costs, Before By-product Credits, per Ounce and All-In Sustaining Costs, After By-product Credits, per Ounce (non-GAAP)

	2023	Q4 2023	2024E
<i>In thousands (except per ounce amounts)</i>			
Total cost of sales (GAAP)	\$ 221,341	\$ 58,945	\$ 205,000
Depreciation, depletion and amortization	(66,037)	(22,749)	(79,800)
Treatment costs	1,109	37	200
Change in product inventory	(2,913)	2,432	(900)
Reclamation and other costs	(871)	(216)	-
Exclusion of cash costs	(2,851)	-	-
Cash Cost, Before By-product Credits ⁽¹⁾	149,778	38,449	124,500
Reclamation and other costs	871	216	900
Sustaining capital	34,971	5,796	13,500
AISC, Before By-product Credits ⁽¹⁾	185,620	44,461	138,900
Total By-product credits	(522)	(132)	(400)
Cash Cost, After By-product Credits	\$ 149,256	\$ 38,317	\$ 124,100
AISC, After By-product Credits	\$ 185,098	\$ 44,329	\$ 138,500
Divided by ounces produced	90	23	78.5
Cash Cost, Before By-product Credits, per Gold Ounce	\$ 1,658	\$ 1,708	\$ 1,586
By-products credits per Gold Ounce	(6)	(6)	(5)
Cash Cost, After By-product Credits, per Gold Ounce	\$ 1,652	\$ 1,702	\$ 1,581
AISC, Before By-product Credits, per Gold Ounce	\$ 2,054	\$ 1,975	\$ 1,769
By-products credits per Gold Ounce	(6)	(6)	(5)
AISC, After By-product Credits, per Gold Ounce	\$ 2,048	\$ 1,969	\$ 1,764

1. Includes all direct and indirect operating costs related to the physical activities of producing metals, including mining, processing and other plant costs, third-party refining and marketing expense, on-site general and administrative costs, royalties and mining production taxes, before by-product revenues earned from all metals other than the primary metal produced at each unit. AISC, Before By-product Credits also includes on-site exploration, reclamation, and sustaining capital costs.

CASH COST AND AISC RECONCILIATION TO GAAP

HECLA MINING COMPANY
NYSE: HL

FEBRUARY 2024 UPDATE

2024 Silver and Gold Estimates

Reconciliation of Total Cost of Sales (GAAP) to Cash Cost, Before By-product Credits and Cash Cost, After By-product Credits (non-GAAP) and All-In Sustaining Costs, Before By-product Credits, per Ounce and All-In Sustaining Costs, After By-product Credits, per Ounce (non-GAAP)

	Silver 2024E	Gold 2024E
<i>In thousands (except per ounce amounts)</i>		
Total cost of sales (GAAP)	\$ 381,400	\$ 205,000
Depreciation, depletion and amortization	(89,400)	(79,800)
Treatment costs	53,700	200
Change in product inventory	2,500	(900)
Reclamation and other costs	400	-
Cash Cost, Before By-product Credits ⁽¹⁾	348,600	124,500
Reclamation and other costs	2,600	900
Sustaining capital	99,400	13,500
General and administrative	48,600	-
AISC, Before By-product Credits ⁽²⁾	499,200	138,900
Total By-product credits	(302,700)	(400)
Cash Cost, After By-product Credits, per Silver/Gold Ounce	\$ 45,900	\$ 124,100
AISC, After By-product Credits	\$ 196,500	\$ 138,500
Divided by ounces produced	14,100	78.5
Cash Cost, Before By-product Credits, per Silver/Gold Ounce	\$ 24.72	\$ 1,586
By-product credits per Silver/Gold Ounce	(21.47)	(5)
Cash Cost, After By-product Credits, per Silver/Gold Ounce	\$ 3.26	\$ 1,581
AISC, Before By-product Credits, per Silver/Gold Ounce	\$ 35.40	\$ 1,769
By-products credit per Silver/Gold Ounce	(21.47)	(5)
AISC, After By-product Credits, per Silver/Gold Ounce	\$ 13.94	\$ 1,764

- Includes all direct and indirect operating costs related directly to the physical activities of producing metals, including mining, processing and other plant costs, third-party refining and marketing expense, on-site general and administrative costs, and royalties, after by-product revenues earned from all metals other than the primary metal produced at each unit. AISC, Before By-product Credits also includes on-site exploration, reclamation, and sustaining capital cost.
- AISC, Before By-product Credits for our consolidated silver properties includes corporate costs for general and administrative expense, exploration and sustaining capital.

FREE CASH FLOW (NON-GAAP) RECONCILIATION

HECLA MINING COMPANY
NYSE: HL

FEBRUARY 2024 UPDATE

Reconciliation of cash provided by operating activities (GAAP) to Free Cash Flow (non-GAAP) for Greens Creek, Lucky Friday and Casa Berardi 2018 to 2023

	Total	Greens Creek	Lucky Friday	Casa Berardi
<i>in millions</i>				
Cash provided by operating activities	1,440	955	150	335
Additions to properties, plants, equipment and mineral reserves	(665)	(195)	(194)	(276)
Exploration	<u>40</u>	<u>18</u>	<u>-</u>	<u>22</u>
Free Cash Flow	<u>\$815</u>	<u>\$778</u>	<u>(\$44)</u>	<u>\$81</u>

Reconciliation of cash provided by operating activities (GAAP) to Free Cash Flow (non-GAAP) for Greens Creek and Lucky Friday 2020 to 2023

	TOTAL	2023	2022	2021	2020
<i>in millions</i>					
Cash provided by operating activities	859	222	189	272	176
Additions to properties, plants, equipment and mineral reserves	(263)	(75)	(88)	(54)	(46)
Exploration	<u>18</u>	<u>8</u>	<u>6</u>	<u>4</u>	<u>-</u>
Free Cash Flow	<u>\$614</u>	<u>\$155</u>	<u>\$107</u>	<u>\$222</u>	<u>\$130</u>

FREE CASH FLOW (NON-GAAP) RECONCILIATION

HECLA MINING COMPANY
NYSE: HL

FEBRUARY 2024 UPDATE

Greens Creek reconciliation of cash provided by operating activities (GAAP) to free cash flow (non-GAAP)

	TOTAL	2023	2022	2021	2020
<i>in millions</i>					
Cash provided by operating activities	694	157	151	209	177
Additions to properties, plants, equipment and mineral reserves	(125)	(44)	(37)	(24)	(20)
Exploration	<u>18</u>	<u>8</u>	<u>6</u>	<u>4</u>	<u>-</u>
Free Cash Flow	<u>\$587</u>	<u>\$121</u>	<u>\$120</u>	<u>\$189</u>	<u>\$157</u>

Lucky Friday reconciliation of cash provided by operating activities (GAAP) to free cash flow (non-GAAP)

	TOTAL	2023	2022	2021	2020
<i>in millions</i>					
Cash provided by operating activities	165	65	38	63	(1)
Less: Additions to properties, plants, equipment and mineral reserves	(138)	(31)	(51)	(30)	(26)
Exploration	<u>-</u>	<u>-</u>	<u>-</u>	<u>-</u>	<u>-</u>
Free Cash Flow	<u>\$ 27</u>	<u>\$ 34</u>	<u>\$ (13)</u>	<u>\$ 33</u>	<u>\$ (27)</u>

FREE CASH FLOW (NON-GAAP) RECONCILIATION

HECLA MINING COMPANY
NYSE: HL

FEBRUARY 2024 UPDATE

Reconciliation of cash provided by operating activities (GAAP) to Free Cash Flow (non-GAAP) for Greens Creek, Lucky Friday and Casa Berardi 2018 to 2023

	Total	Greens Creek	Lucky Friday	Casa Berardi
<i>in millions</i>				
Cash provided by operating activities	1,442	955	150	337
Additions to properties, plants, equipment and mineral reserves	(664)	(194)	(194)	(276)
Exploration	40	18	-	22
Free Cash Flow	\$818	\$779	(\$44)	\$83

Reconciliation of cash provided by operating activities (GAAP) to Free Cash Flow (non-GAAP) for Greens Creek and Lucky Friday 2020 to Q3 2023

	TOTAL	YTD 2023	2022	2021	2020
<i>in millions</i>					
Cash provided by operating activities	826	189	189	272	176
Additions to properties, plants, equipment and mineral reserves	(263)	(75)	(88)	(54)	(46)
Exploration	17	7	6	4	-
Free Cash Flow	\$580	\$121	\$107	\$222	\$130

FREE CASH FLOW (NON-GAAP) RECONCILIATION

HECLA MINING COMPANY
NYSE: HL

FEBRUARY 2024 UPDATE

Greens Creek reconciliation of cash provided by operating activities (GAAP) to free cash flow (non-GAAP)

	TOTAL	YTD 2023	2022	2021	2020
<i>in millions</i>					
Cash provided by operating activities	660	123	151	209	177
Additions to properties, plants, equipment and mineral reserves	(109)	(28)	(37)	(24)	(20)
Exploration	<u>17</u>	<u>7</u>	<u>6</u>	<u>4</u>	<u>-</u>
Free Cash Flow	<u>\$568</u>	<u>\$102</u>	<u>\$120</u>	<u>\$189</u>	<u>\$157</u>

Lucky Friday reconciliation of cash provided by operating activities (GAAP) to free cash flow (non-GAAP)

	TOTAL	YTD 2023	2022	2021	2020
<i>in millions</i>					
Cash provided by operating activities	166	66	38	63	(1)
Less: Additions to properties, plants, equipment and mineral reserves	(154)	(47)	(51)	(30)	(26)
Exploration	<u>-</u>	<u>-</u>	<u>-</u>	<u>-</u>	<u>-</u>
Free Cash Flow	<u>\$ 12</u>	<u>\$ 19</u>	<u>\$ (13)</u>	<u>\$ 33</u>	<u>\$ (27)</u>

A photograph of two workers in safety gear handling large metal components at an outdoor industrial site. The worker on the left is a man wearing a black hard hat with a headlamp, safety glasses, and an orange high-visibility vest over a dark t-shirt. He is wearing blue gloves and is focused on the task. The worker on the right is a woman with long blonde hair, wearing a white hard hat with a headlamp, safety glasses, and an orange high-visibility shirt. She is also wearing grey gloves and is looking towards the man. They are both holding a large, dark, rectangular metal component. In the background, there are stacks of similar metal components, a white pickup truck, and green foliage. The scene is outdoors, and it appears to be raining or has recently rained, as there are water droplets visible in the air.

MINERAL RESERVES AND RESOURCES

RESPONSIBLE. SAFE. INNOVATIVE.

Hecla Mining Company - Mineral Reserves - 12/31/2023 ⁽¹⁾ (1/2)

HECLA MINING COMPANY
NYSE: HL

FEBRUARY 2024 UPDATE

Proven Reserves ⁽¹⁾											
Asset	Location	Ownership	Tons (000)	Silver (oz/ton)	Gold (oz/ton)	Lead %	Zinc %	Silver (000 oz)	Gold (000 oz)	Lead (Tons)	Zinc (Tons)
Greens Creek ^(2,3)	United States	100.0%	9	11.3	0.08	3.5	8.4	100	1	310	740
Lucky Friday ^(2,4)	United States	100.0%	5,299	12.8	-	8.0	3.8	67,595	-	424,080	201,280
Casa Berardi Underground ^(2,5)	Canada	100.0%	55	-	0.12	-	-	-	7	-	-
Casa Berardi Open Pit ^(2,5)	Canada	100.0%	4,240	-	0.09	-	-	-	379	-	-
Keno Hill ^(2,6)	Canada	100.0%	-	-	-	-	-	-	-	-	-
Total			9,603					67,695	387	424,390	202,020
Probable Reserves ⁽⁷⁾											
Asset	Location	Ownership	Tons (000)	Silver (oz/ton)	Gold (oz/ton)	Lead %	Zinc %	Silver (000 oz)	Gold (000 oz)	Lead (Tons)	Zinc (Tons)
Greens Creek ^(2,3)	United States	100.0%	10,009	10.5	0.09	2.5	6.6	105,222	881	250,270	657,990
Lucky Friday ^(2,4)	United States	100.0%	966	10.8	-	7.1	2.9	10,411	-	68,320	28,100
Casa Berardi Underground ^(2,5)	Canada	100.0%	175	-	0.15	-	-	-	26	-	-
Casa Berardi Open Pit ^(2,5)	Canada	100.0%	11,384	-	0.08	-	-	-	859	-	-
Keno Hill ^(2,6)	Canada	100.0%	2,069	26.6	0.01	2.8	2.5	55,068	13	58,170	52,380
Total			24,603					170,601	1,778	376,760	738,470

Totals may not represent the sum of parts due to rounding

Hecla Mining Company - Mineral Reserves - 12/31/2023 ⁽¹⁾ (2/2)

HECLA MINING COMPANY
NYSE: HL

FEBRUARY 2024 UPDATE

Proven & Probable Reserves											
Asset	Location	Ownership	Tons (000)	Silver (oz/ton)	Gold (oz/ton)	Lead %	Zinc %	Silver (000 oz)	Gold (000 oz)	Lead (Tons)	Zinc (Tons)
Greens Creek ^(2,3)	United States	100.0%	10,018	10.5	0.09	2.5	6.6	105,221	880	250,580	658,730
Lucky Friday ^(2,4)	United States	100.0%	6,265	12.5	-	7.9	3.7	78,006	-	492,400	229,380
Casa Berardi Underground ^(2,5)	Canada	100.0%	230	-	0.14	-	-	-	33	-	-
Casa Berardi Open Pit ^(2,5)	Canada	100.0%	15,624	-	0.08	-	-	-	1,238	-	-
Keno Hill ^(2,6)	Canada	100.0%	2,069	26.6	0.01	2.8	2.5	55,068	13	58,170	52,380
Total			34,206					238,296	2,165	801,150	940,490

Totals may not represent the sum of parts due to rounding

Hecla Mining Company - Mineral Resources - 12/31/2023 ⁽⁸⁾ (1/4)

HECLA MINING COMPANY
NYSE: HL

FEBRUARY 2024 UPDATE

Measured Resources ⁽⁹⁾													
Asset	Location	Ownership	Tons (000)	Silver (oz/ton)	Gold (oz/ton)	Lead %	Zinc %	Copper %	Silver (000 oz)	Gold (000 oz)	Lead (Tons)	Zinc (Tons)	Copper (Tons)
Greens Creek ^(12,13)	United States	100.0%	-	-	-	-	-	-	-	-	-	-	-
Lucky Friday ^(12,14)	United States	100.0%	5,326	8.6	-	5.6	2.7	-	45,785	-	299,360	146,420	-
Casa Berardi Underground ^(12,15)	Canada	100.0%	1,099	-	0.21	-	-	-	-	234	-	-	-
Casa Berardi Open Pit ^(12,15)	Canada	100.0%	67	-	0.03	-	-	-	-	2	-	-	-
Keno Hill ^(12,16)	Canada	100.0%	-	-	-	-	-	-	-	-	-	-	-
San Sebastian - Oxide ⁽¹⁷⁾	Mexico	100.0%	-	-	-	-	-	-	-	-	-	-	-
San Sebastian - Sulfide ⁽¹⁷⁾	Mexico	100.0%	-	-	-	-	-	-	-	-	-	-	-
Fire Creek ^(18,19)	United States	100.0%	-	-	-	-	-	-	-	-	-	-	-
Hollister ^(18,20)	United States	100.0%	18	4.9	0.59	-	-	-	87	10	-	-	-
Midas ^(18,21)	United States	100.0%	2	7.6	0.68	-	-	-	14	1	-	-	-
Heva ⁽²²⁾	Canada	100.0%	-	-	-	-	-	-	-	-	-	-	-
Hosco ⁽²²⁾	Canada	100.0%	-	-	-	-	-	-	-	-	-	-	-
Star ^(12,23)	United States	100.0%	-	-	-	-	-	-	-	-	-	-	-
Rackla - Tiger Underground ⁽²⁹⁾	Canada	100.0%	881	-	0.09	-	-	-	-	75	-	-	-
Rackla - Tiger Open Pit ⁽²⁹⁾	Canada	100.0%	32	-	0.06	-	-	-	-	2	-	-	-
Rackla - Osiris Underground ⁽³⁰⁾	Canada	100.0%	-	-	-	-	-	-	-	-	-	-	-
Rackla - Osiris Open Pit ⁽³⁰⁾	Canada	100.0%	-	-	-	-	-	-	-	-	-	-	-
Total			7,425						45,886	324	299,360	146,420	-

Totals may not represent the sum of parts due to rounding

Hecla Mining Company - Mineral Resources - 12/31/2023 ⁽⁸⁾ (2/4)

HECLA MINING COMPANY
NYSE: HL

FEBRUARY 2024 UPDATE

Indicated Resources ⁽¹⁰⁾													
Asset	Location	Ownership	Tons (000)	Silver (oz/ton)	Gold (oz/ton)	Lead %	Zinc %	Copper %	Silver (000 oz)	Gold (000 oz)	Lead (Tons)	Zinc (Tons)	Copper (Tons)
Greens Creek ^(12,13)	United States	100.0%	8,040	13.9	0.10	3.0	8.0	-	111,526	800	239,250	643,950	-
Lucky Friday ^(12,14)	United States	100.0%	1,011	8.0	-	6.0	2.7	-	8,136	-	60,200	26,910	-
Casa Berardi Underground ^(12,15)	Canada	100.0%	3,154	-	0.19	-	-	-	-	603	-	-	-
Casa Berardi Open Pit ^(12,15)	Canada	100.0%	205	-	0.03	-	-	-	-	5	-	-	-
Keno Hill ^(12,16)	Canada	100.0%	4,504	7.5	0.006	0.9	3.5	-	33,926	26	41,120	157,350	-
San Sebastian - Oxide ⁽¹⁷⁾	Mexico	100.0%	1,453	6.5	0.09	-	-	-	9,430	135	-	-	-
San Sebastian - Sulfide ⁽¹⁷⁾	Mexico	100.0%	1,187	5.5	0.01	1.9	2.9	1.2	6,579	16	22,420	34,100	14,650
Fire Creek ^(18,19)	United States	100.0%	114	1.0	0.46	-	-	-	113	53	-	-	-
Hollister ^(18,20)	United States	100.0%	70	1.9	0.58	-	-	-	130	40	-	-	-
Midas ^(18,21)	United States	100.0%	76	5.7	0.42	-	-	-	430	32	-	-	-
Heva ⁽²²⁾	Canada	100.0%	1,266	-	0.06	-	-	-	-	76	-	-	-
Hosco ⁽²²⁾	Canada	100.0%	29,287	-	0.04	-	-	-	-	1,202	-	-	-
Star ^(12,23)	United States	100.0%	1,068	3.0	-	6.4	7.7	-	3,177	-	67,970	82,040	-
Rackla - Tiger Underground ⁽²⁹⁾	Canada	100.0%	3,116	-	0.10	-	-	-	-	311	-	-	-
Rackla - Tiger Open Pit ⁽²⁹⁾	Canada	100.0%	960	-	0.08	-	-	-	-	76	-	-	-
Rackla - Osiris Underground ⁽³⁰⁾	Canada	100.0%	5,135	-	0.12	-	-	-	-	604	-	-	-
Rackla - Osiris Open Pit ⁽³⁰⁾	Canada	100.0%	960	-	0.13	-	-	-	-	128	-	-	-
Total			61,606						173,447	4,107	430,960	944,350	14,650

Totals may not represent the sum of parts due to rounding

Hecla Mining Company - Mineral Resources - 12/31/2023 ⁽⁸⁾ (3/4)

HECLA MINING COMPANY
NYSE: HL

FEBRUARY 2024 UPDATE

Measured & Indicated Resources													
Asset	Location	Ownership	Tons (000)	Silver (oz/ton)	Gold (oz/ton)	Lead %	Zinc %	Copper %	Silver (000 oz)	Gold (000 oz)	Lead (Tons)	Zinc (Tons)	Copper (Tons)
Greens Creek ^(12,13)	United States	100.0%	8,040	13.9	0.10	3.0	8.0	-	111,526	800	239,250	643,950	-
Lucky Friday ^(12,14)	United States	100.0%	6,337	8.3	-	5.8	2.7	-	53,921	-	359,560	173,330	-
Casa Berardi Underground ^(12,15)	Canada	100.0%	4,253	-	0.20	-	-	-	-	837	-	-	-
Casa Berardi Open Pit ^(12,15)	Canada	100.0%	272	-	0.03	-	-	-	-	7	-	-	-
Keno Hill ^(12,16)	Canada	100.0%	4,504	7.5	0.006	0.9	3.5	-	33,926	26	41,120	157,350	-
San Sebastian - Oxide ⁽¹⁷⁾	Mexico	100.0%	1,453	6.5	0.09	-	-	-	9,430	135	-	-	-
San Sebastian - Sulfide ⁽¹⁷⁾	Mexico	100.0%	1,187	5.5	0.01	1.9	2.9	1.2	6,579	16	22,420	34,100	14,650
Fire Creek ^(18,19)	United States	100.0%	114	1.0	0.46	-	-	-	113	53	-	-	-
Hollister ^(18,20)	United States	100.0%	88	2.5	0.58	-	-	-	217	50	-	-	-
Midas ^(18,21)	United States	100.0%	78	5.7	0.43	-	-	-	444	33	-	-	-
Heva ⁽²²⁾	Canada	100.0%	1,266	-	0.06	-	-	-	-	76	-	-	-
Hosco ⁽²²⁾	Canada	100.0%	29,287	-	0.04	-	-	-	-	1,202	-	-	-
Star ^(12,23)	United States	100.0%	1,068	3.0	-	6.4	7.7	-	3,177	-	67,970	82,040	-
Rackla - Tiger Underground ⁽²⁹⁾	Canada	100.0%	3,997	-	0.10	-	-	-	-	386	-	-	-
Rackla - Tiger Open Pit ⁽²⁹⁾	Canada	100.0%	992	-	0.08	-	-	-	-	78	-	-	-
Rackla - Osiris Underground ⁽³⁰⁾	Canada	100.0%	5,135	-	0.12	-	-	-	-	604	-	-	-
Rackla - Osiris Open Pit ⁽³⁰⁾	Canada	100.0%	960	-	0.13	-	-	-	-	128	-	-	-
Total			69,031						219,333	4,431	730,320	1,090,770	14,650

Totals may not represent the sum of parts due to rounding

Hecla Mining Company - Mineral Resources - 12/31/2023 ⁽⁸⁾ (4/4)

HECLA MINING COMPANY
NYSE: HL

FEBRUARY 2024 UPDATE

Inferred Resources ⁽¹¹⁾													
Asset	Location	Ownership	Tons (000)	Silver (oz/ton)	Gold (oz/ton)	Lead %	Zinc %	Copper %	Silver (000 oz)	Gold (000 oz)	Lead (Tons)	Zinc (Tons)	Copper (Tons)
Greens Creek ^(12,13)	United States	100.0%	1,930	13.4	0.08	2.9	6.9	-	25,891	154	55,890	133,260	-
Lucky Friday ^(12,14)	United States	100.0%	3,600	7.8	-	5.9	2.8	-	27,934	-	211,340	100,630	-
Casa Berardi Underground ^(12,15)	Canada	100.0%	1,475	-	0.22	-	-	-	-	332	-	-	-
Casa Berardi Open Pit ^(12,15)	Canada	100.0%	828	-	0.08	-	-	-	-	64	-	-	-
Keno Hill ^(12,16)	Canada	100.0%	2,836	11.2	0.003	1.1	1.8	-	31,791	9	32,040	51,870	-
San Sebastian - Oxide ⁽¹⁷⁾	Mexico	100.0%	3,490	6.4	0.05	-	-	-	22,353	182	-	-	-
San Sebastian - Sulfide ⁽¹⁷⁾	Mexico	100.0%	385	4.2	0.01	1.6	2.3	0.9	1,606	5	6,070	8,830	3,330
Fire Creek ^(18,19)	United States	100.0%	764	0.5	0.51	-	-	-	393	392	-	-	-
Fire Creek - Open Pit ⁽²⁴⁾	United States	100.0%	74,584	0.1	0.03	-	-	-	5,232	2,178	-	-	-
Hollister ^(18,20)	United States	100.0%	642	3.0	0.42	-	-	-	1,916	273	-	-	-
Midas ^(18,21)	United States	100.0%	1,232	6.3	0.50	-	-	-	7,723	615	-	-	-
Heva ⁽²²⁾	Canada	100.0%	2,787	-	0.08	-	-	-	-	216	-	-	-
Hosco ⁽²²⁾	Canada	100.0%	17,726	-	0.04	-	-	-	-	663	-	-	-
Star ^(12,23)	United States	100.0%	2,851	3.1	-	5.9	5.9	-	8,795	-	168,180	166,930	-
San Juan Silver ^(12,25)	United States	100.0%	2,570	14.9	0.01	1.4	1.1	-	38,203	34	49,400	39,850	-
Monte Cristo ⁽²⁶⁾	United States	100.0%	913	0.3	0.14	-	-	-	271	131	-	-	-
Rock Creek ^(12,27)	United States	100.0%	100,086	1.5	-	-	-	0.7	148,736	-	-	-	658,680
Libby Exploration Project ^(12,28)	United States	100.0%	112,185	1.6	-	-	-	0.7	183,346	-	-	-	759,420
Rackla - Tiger Underground ⁽²⁹⁾	Canada	100.0%	30	-	0.05	-	-	-	-	2	-	-	-
Rackla - Tiger Open Pit ⁽²⁹⁾	Canada	100.0%	152	-	0.07	-	-	-	-	10	-	-	-
Rackla - Osiris Underground ⁽³⁰⁾	Canada	100.0%	5,919	-	0.09	-	-	-	-	530	-	-	-
Rackla - Osiris Open Pit ⁽³⁰⁾	Canada	100.0%	4,398	-	0.12	-	-	-	-	514	-	-	-
Total			341,383						504,190	6,304	522,920	501,370	1,421,430

Totals may not represent the sum of parts due to rounding

MINERAL RESERVES AND RESOURCES FOOTNOTES

HECLA MINING COMPANY
NYSE: HL

FEBRUARY 2024 UPDATE

Note: All estimates are in-situ except for the proven reserves at Greens Creek which are in surface stockpiles. Mineral resources are exclusive of reserves.

1. The term "reserve" means an estimate of tonnage and grade or quality of indicated and measured mineral resources that, in the opinion of the qualified person, can be the basis of an economically viable project. More specifically, it is the economically mineable part of a measured or indicated mineral resource, which includes diluting materials and allowances for losses that may occur when the material is mined or extracted. The term "proven reserves" means the economically mineable part of a measured mineral resource and can only result from conversion of a measured mineral resource. See footnotes 8 and 9 below.
2. Mineral reserves are based on \$17/oz silver, \$1,650/oz gold, \$0.90/lb lead, \$1.15/lb zinc, unless otherwise stated. All Mineral Reserves are reported in-situ with estimates of mining dilution and mining loss.
3. The reserve NSR cut-off values for Greens Creek are \$230/ton for all zones except the Gallagher Zone at \$235/ton; metallurgical recoveries (actual 2023): 80% for silver, 74% for gold, 82% for lead, and 89% for zinc.
4. The reserve NSR cut-off values for Lucky Friday are \$241.34/ton for the 30 Vein and \$268.67/ton for the Intermediate Veins; metallurgical recoveries (actual 2023): 96% for silver, 95% for lead, and 85% for zinc.
5. The average reserve cut-off grades at Casa Berardi are 0.11 oz/ton gold underground and 0.03 oz/ton gold for open pit. Metallurgical recovery (actual 2023): 85% for gold; US\$/CAN\$ exchange rate: 1:1.3. Underground mineral reserves at Casa Berardi were based on a gold price of \$1,850/oz.
6. The reserve NSR cut-off value at Keno Hill is \$244.24/ton (CAN\$350/tonne), Metallurgical recovery (actual 2023): 96% for silver, 93% for lead, 81% for zinc; US\$/CAN\$ exchange rate: 1:1.3.
7. The term "probable reserves" means the economically mineable part of an indicated and, in some cases, a measured mineral resource. See footnotes 9 and 10 below.
8. The term "mineral resources" means a concentration or occurrence of material of economic interest in or on the Earth's crust in such form, grade or quality, and quantity that there are reasonable prospects for economic extraction. A mineral resource is a reasonable estimate of mineralization, taking into account relevant factors such as cut-off grade, likely mining dimensions, location or continuity, that, with the assumed and justifiable technical and economic conditions, is likely to, in whole or in part, become economically extractable. It is not merely an inventory of all mineralization drilled or sampled.
9. The term "measured resources" means that part of a mineral resource for which quantity and grade or quality are estimated on the basis of conclusive geological evidence and sampling. The level of geological certainty associated with a measured mineral resource is sufficient to allow a qualified person to apply modifying factors in sufficient detail to support detailed mine planning and final evaluation of the economic viability of the deposit. Because a measured mineral resource has a higher level of confidence than the level of confidence of either an indicated mineral resource or an inferred mineral resource, a measured mineral resource may be converted to a proven mineral reserve or to a probable mineral reserve.
10. The term "indicated resources" means that part of a mineral resource for which quantity and grade or quality are estimated on the basis of adequate geological evidence and sampling. The level of geological certainty associated with an indicated mineral resource is sufficient to allow a qualified person to apply modifying factors in sufficient detail to support mine planning and evaluation of the economic viability of the deposit. Because an indicated mineral resource has a lower level of confidence than the level of confidence of a measured mineral resource, an indicated mineral resource may only be converted to a probable mineral reserve.
11. The term "inferred resources" means that part of a mineral resource for which quantity and grade or quality are estimated on the basis of limited geological evidence and sampling. The level of geological uncertainty associated with an inferred mineral resource is too high to apply relevant technical and economic factors likely to influence the prospects of economic extraction in a manner useful for evaluation of economic viability. Because an inferred mineral resource has the lowest level of geological confidence of all mineral resources, which prevents the application of the modifying factors in a manner useful for evaluation of economic viability, an inferred mineral resource may not be considered when assessing the economic viability of a mining project, and may not be converted to a mineral reserve.
12. Mineral resources for operating properties are based on \$1750/oz gold, \$21/oz silver, \$1.15/lb lead, \$1.35/lb zinc and \$3.00/lb copper, unless otherwise stated. Mineral resources for non-operating resource projects are based on \$1,700/oz for gold, \$21.00/oz for silver, \$1.15/lb for lead, \$1.35/lb for zinc and \$3.00/lb for copper, unless otherwise stated.
13. The resource NSR cut-off values for Greens Creek are \$230/ton for all zones except the Gallagher Zone at \$235/ton; metallurgical recoveries (actual 2023): 80% for silver, 74% for gold, 82% for lead, and 89% for zinc.
14. The resource NSR cut-off values for Lucky Friday are \$200.57/ton for the 30 Vein, \$227.90/ton for the Intermediate Veins and \$198.48/ton for the Lucky Friday Veins; metallurgical recoveries (actual 2023): 96% for silver, 95% for lead, and 85% for zinc.
15. The average resource cut-off grades at Casa Berardi are 0.12 oz/ton gold for underground and 0.03 oz/ton gold for open pit; metallurgical recovery (actual 2023): 85% for gold; US\$/CAN\$ exchange rate: 1:1.3.

MINERAL RESERVES AND RESOURCES FOOTNOTES

HECLA MINING COMPANY
NYSE: HL

FEBRUARY 2024 UPDATE

17. Indicated resources for most zones at San Sebastian based on \$1,500/oz gold, \$21/oz silver, \$1.15/lb lead, \$1.35/lb zinc and \$3.00/lb copper using a cut-off grade of \$90.72/ton (\$100/tonne); \$1,700/oz gold used for Toro, Bronco, and Tigre zones. Metallurgical recoveries based on grade dependent recovery curves: recoveries at the mean resource grade average 89% for silver and 84% for gold for oxide material and 85% for silver, 83% for gold, 81% for lead, 86% for zinc, and 83% for copper for sulfide material. Resources reported at a minimum mining width of 8.2 feet (2.5m) for Middle Vein, North Vein, and East Francine, 6.5ft (1.98m) for El Toro, El Bronco, and El Tigre, and 4.9 feet (1.5 m) for Hugh Zone and Andrea.
18. Mineral resources for Fire Creek, Hollister and Midas are reported using \$1,500/oz gold and \$21/oz silver prices, unless otherwise noted. A minimum mining width is defined as four feet or the vein true thickness plus two feet, whichever is greater.
19. Fire Creek mineral resources are reported at a gold equivalent cut-off grade of 0.283 oz/ton. Metallurgical recoveries: 90% for gold and 70% for silver.
20. Hollister mineral resources, including the Hatter Graben are reported at a gold equivalent cut-off grade of 0.238 oz/ton. Metallurgical recoveries: 88% for gold and 66% for silver
21. Midas mineral resources are reported at a gold equivalent cut-off grade of 0.237 oz/ton. Metallurgical recoveries: 90% for gold and 70% for silver. A gold-equivalent cut-off grade of 0.1 oz/ton and a gold price of \$1700/oz used for Sinter Zone with resources undiluted.
22. Measured, indicated and inferred resources at Heva and Hosco are based on \$1,500/oz gold. Resources are without dilution or material loss at a gold cut-off grade of 0.01 oz/ton for open pit and 0.088 oz/ton for underground. Metallurgical recovery: Heva: 95% for gold, Hosco: 88% for gold.
23. Indicated and Inferred resources at the Star property are reported using a minimum mining width of 4.3 feet and an NSR cut-off value of \$150/ton; Metallurgical recovery: 93% for silver, 93% for lead, and 87% for zinc.
24. Inferred open-pit resources for Fire Creek calculated November 30, 2017 using gold and silver recoveries of 65% and 30% for oxide material and 60% and 25% for mixed oxide-sulfide material. Indicated Resources reclassified as Inferred in 2019. Open pit resources are calculated at \$1400 gold and \$19.83 silver and cut-off grade of 0.01 Au Equivalent oz/ton and is inclusive of 10% mining dilution and 5% ore loss. Open pit mineral resources exclusive of underground mineral resources.NI43-101 Technical Report for the Fire Creek Project, Lander County, Nevada; Effective Date March 31, 2018; prepared by Practical Mining LLC, Mark Odell, P.E. for Hecla Mining Company, June 28, 2018.
25. Inferred resources reported at a minimum mining width of 6.0 feet for Bulldog and an NSR cut-off value of \$175/ton and 5.0 feet for Equity and North Amethyst veins at an NSR cut-off value of \$100/ton; Metallurgical recoveries based on grade dependent recovery curves; metal recoveries at the mean resource grade average 89% silver, 74% lead, and 81% zinc for the Bulldog and a constant 85% gold and 85% silver for North Amethyst and Equity.
26. Inferred resource at Monte Cristo reported at a minimum mining width of 5.0 feet; resources based on \$1,400 Au, \$26.50 Ag using a 0.06 oz/ton gold cut-off grade. Metallurgical recovery: 90% for gold and 90% silver.
27. Inferred resource at Rock Creek reported at a minimum thickness of 15 feet and an NSR cut-off value of \$24.50/ton; Metallurgical recoveries: 88% for silver and 92% for copper. Resources adjusted based on mining restrictions as defined by U.S. Forest Service, Kootenai National Forest in the June 2003 'Record of Decision, Rock Creek Project'.
28. Inferred resource at the Libby Exploration Project reported at a minimum thickness of 15 feet and an NSR cut-off value of \$24.50/ton NSR; Metallurgical recoveries: 88% for silver and 92% copper. Resources adjusted based on mining restrictions as defined by U.S. Forest Service, Kootenai National Forest, Montana DEQ in December 2015 'Joint Final EIS, Montanore Project' and the February 2016 U.S Forest Service - Kootenai National Forest 'Record of Decision, Montanore Project'.
29. Mineral resources at the Rackla-Tiger Project are based on a gold price of \$1650/oz, metallurgical recovery of 95% for gold, and cut-off grades of 0.02 oz/ton gold for the open pit portion of the resources and 0.04 oz/ton gold for the underground portions of the resources; US\$/CAN\$ exchange rate: 1:1.3.
30. Mineral resources at the Rackla-Osiris Project are based on a gold price of \$1850/oz, metallurgical recovery of 83% for gold, and cut-off grades of 0.03 oz/ton gold for the open pit portion of the resources and 0.06 oz/ton gold for the underground portions of the resources; US\$/CAN\$ exchange rate: 1:1.3.



THANK YOU

RESPONSIBLE. SAFE. INNOVATIVE.

