

A GOOD EMPLOYER AND A GOOD NEIGHBOR

For almost a century and a half, mining has provided a strong economic anchor for Juneau, and we're pleased to continue that tradition.

\$2.4 million

We have the highest taxable assessed property value in Juneau and pay \$2.4 million a year in property and sales tax.

\$58 million

We purchase \$58 million in goods and services from 49 Juneau businesses each year.

\$70 million

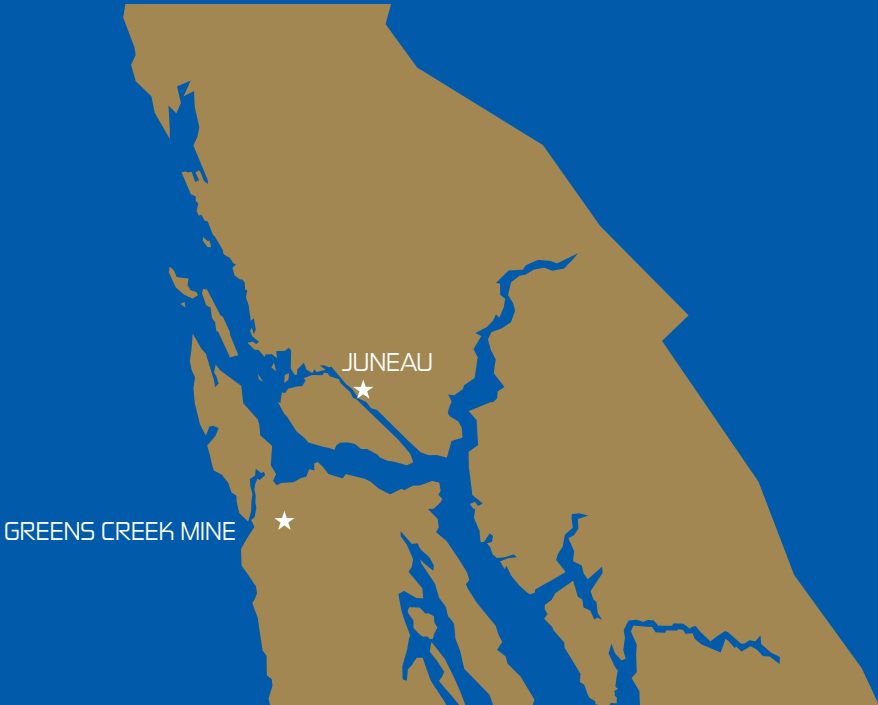
We are Juneau's largest private-sector employer, supporting 865 jobs and \$70 million in total wages, with an average salary more than twice the Juneau average.

Keep power costs down

Our power purchases from AEL&P help the environment and help keep Juneau power costs the lowest in Alaska.

Support 50+ organizations

We are one of the most charitable companies in Juneau, helping support 50+ organizations.



PERSISTENCE. PERSPECTIVE. POSITION.



Incorporated on Oct. 14, 1891, Hecla Mining Company stands today as the last of the pioneer mining companies of north Idaho's fabled Silver Valley — the oldest U.S.-based precious-metals mining company and the largest primary silver producer in the United States.

Hecla operates five silver mines: Greens Creek, Lucky Friday and San Sebastian, in addition to the Casa Berardi gold mine. Hecla Mining Company's newest assets, Hollister and Midas, are gold and silver bearing.

Hecla is headquartered in Coeur d'Alene, Idaho. The company's common stock has been traded on the New York Stock Exchange for over 50 years.



GREENS CREEK JUNEAU OFFICE
3000 Vintage Blvd. Suite 120
Juneau, AK 99803
907.789.8100

HECLA CORPORATE OFFICE
6500 N. Mineral Drive, Suite 200
Coeur d'Alene, ID 83815
208.769.4100



WE ARE HECLA
responsible ▲ safe ▲ innovative



heclagreencreek.com

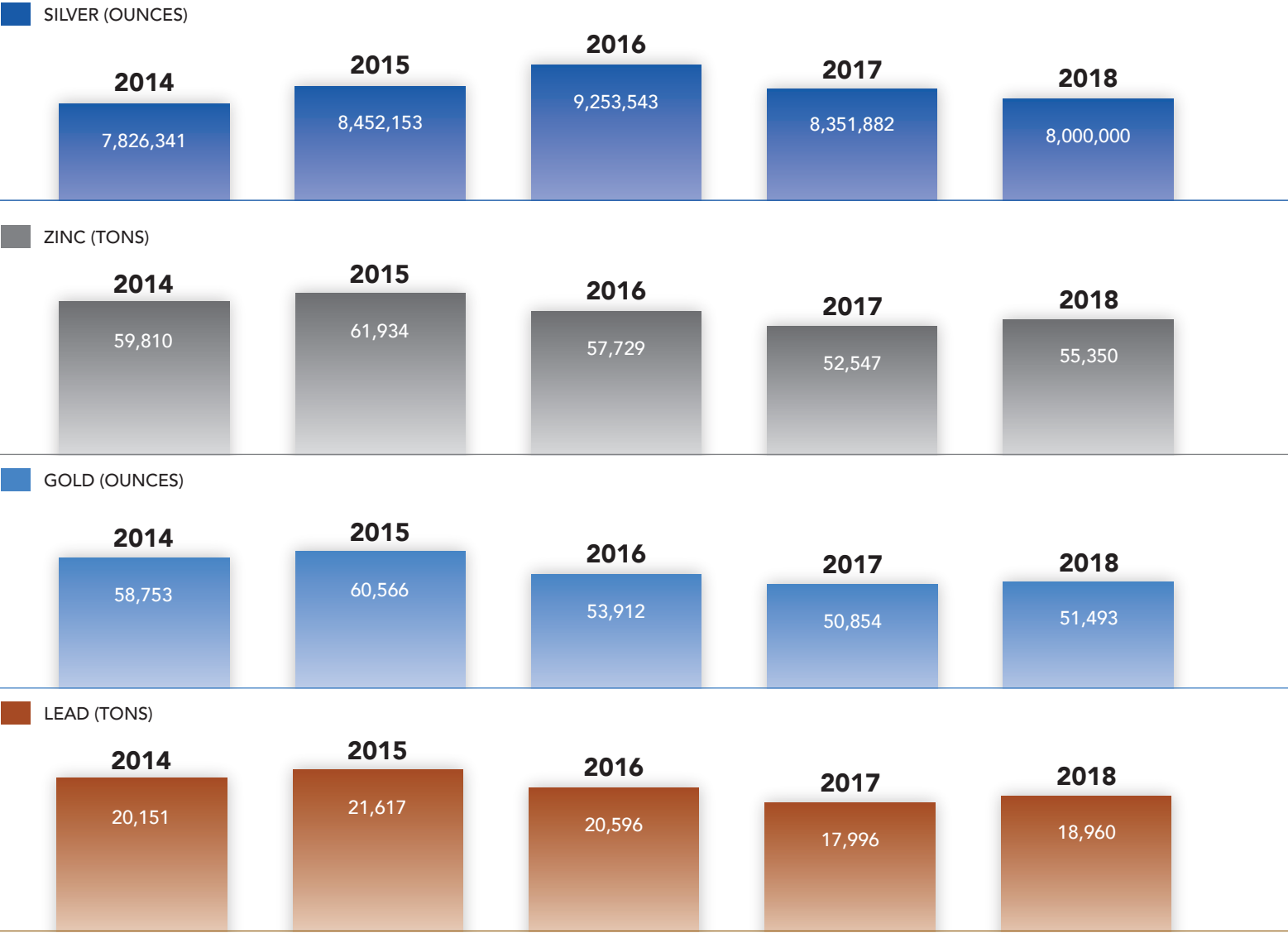
WORLD-CLASS SILVER MINE

Greens Creek is an underground silver, zinc, lead and gold mine operated by Hecla Greens Creek Mining Co. The mine, which is located about 18 miles southwest of Juneau in the Admiralty Island National Monument, is one of the largest and lowest-cost primary silver mines in the world.

GREENS CREEK IN BRIEF	
Discovered	1975
In full production	1989
Patented lode claims	17
Size of operation	365 acres, less than 1 square mile
Miles of road	13



ANNUAL PRODUCTION

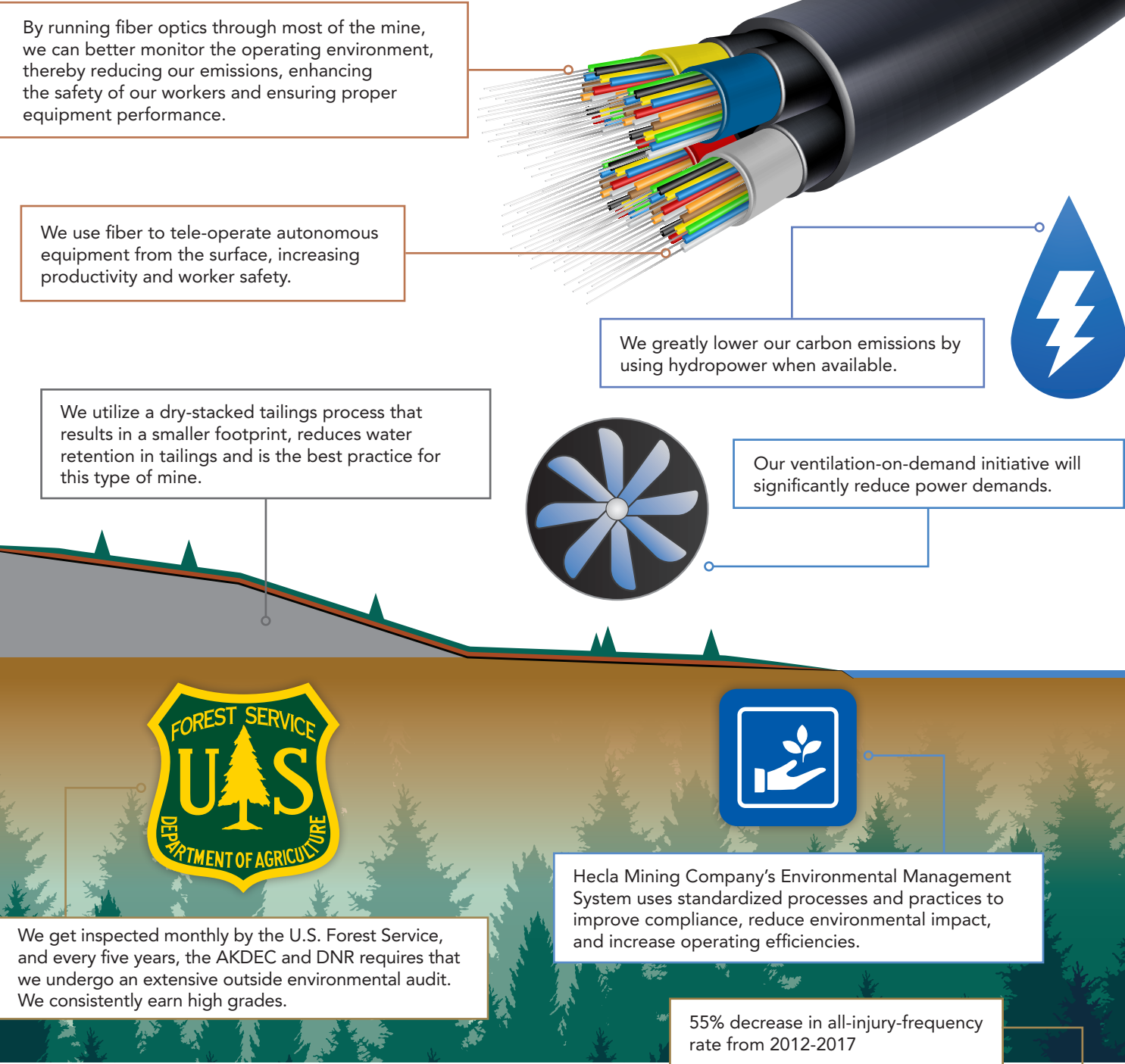


DAILY PRODUCTION
2,350 tons of ore

PROVEN AND PROBABLE RESERVES (2018 ESTIMATES)			
Silver	107 million ounces	Lead	262,940 tons
Gold	840,000 ounces	Zinc	706,500 tons

OPERATING SMALL AND SMART

As the only mine permitted to operate in a national monument, we work every day to go beyond the stringent regulations that govern our operations and we use state-of-the-art technology to reduce our impacts.



PROTECTING OUR EMPLOYEES

We never talk about operations without also talking about safety. Greens Creek was the first hardrock mining company to become certified by the National Mining Association (NMA) in the new CORESafety program.

